

# Drug Use Patterns Research Study Points to Problem Areas

The first of two reports stemming from a comparison of drug use patterns in four southern Michigan secondary schools, conducted by Dr. Richard B. Stuart and doctoral candidate Marjorie Schuman of the University of Michigan, has shed some factual light on drug use among junior and senior high school students in Chelsea.

This spring, a three-part questionnaire was administered to secondary school students in Chelsea, Ann Arbor, Willow Run and Dearborn. The questionnaire, which assured anonymity to students in the study, covered self-reporting of drug use, a "test" of a student's knowledge of pharmacology, physiology and legal consequences of drug use, and self-reporting of selected demographic characteristics (age, sex, grade, etc.).

For the study, stratified random samples of the school populations were drawn, maintaining a proportional representation of males and females in the school population. In Chelsea, 22.55 percent of the junior and senior high school students (316 of 1,401) participated in the study.

While the researchers attempt-

ed to eliminate as many biases from the study as possible, they did find it biased in two respects. Since the study includes only those students attending school on the day the questionnaire was administered, "it is possible that many students who were absent might have modified the observed rates of response, a strong possibility being that the non-attending students might be the group most likely to include heavier drug users."

The researchers also found that black students are under-represented in the study since many blacks refused to complete the questionnaire.

In the 45-minute questionnaire, drugs were loosely classified along pharmacological lines into six categories: 1) Alcohol (beer, wine, hard liquor), 2) Soft hallucinogens (marijuana and hashish), 3) Hard hallucinogens (LSD, mescaline, peyote, psilocybin, DMT, DET, MDA, STP, etc.), 4) Barbiturates (Seconal, Tuinol, etc.), 5) Amphetamines (methamphetamine, dexedrine, dexomyl, etc.), and 6) Narcotics (heroin, cocaine, opium, etc.).

Students were asked to report only those experiences with any

drugs in the above categories which they had had personally, and which they used without a physician's prescription or advice.

While it would be impossible to report the complete findings of the researchers, some facts and observations may be noted:

As would be expected, Chelsea students are more familiar with alcohol than any of the other drugs listed. The range of those reporting at least one experience with alcohol varied from a low of 60 percent among 15-year-olds to a high of 100 percent among 18-year-olds. Surprisingly, the curve for Chelsea showed a drop in experience from age 11 to 15, with 72.2 percent of the 11-year-olds reporting they had used alcohol at least once.

The use of soft hallucinogens (marijuana and hashish) was the next most common drug experience for Chelsea students. Students reporting at least one experience with marijuana or hashish ranged from a low of 6.4 percent of the 12-year-olds participating in the study to a high of 44.2 percent of the 16-year-olds. No experiences with soft hallucinogens were reported by 11-year-olds, and 29.3 percent of the

17-year-olds and 36.8 percent of the 18-year-olds reported using one of the drugs at least once.

The research report written by Dr. Stuart and Miss Schuman said "In general the use of both soft and hard hallucinogens was from 35 to 60 percent greater in the remaining two communities, with the greatest change in use patterns in the first two communities occurring between the ages of 14 and 15."

Use of hard hallucinogens (LSD, mescaline, psilocybin, etc.) ranged from 4.3 percent (or 2 of 47 students) among 12-year-olds, to a high of 24.4 percent (10 of 41 students) among 17-year-olds. Only 28 of 308 Chelsea students tested reported using barbiturates, 20 of 308 reported using amphetamines and 19 of 308 reported using narcotics.

It must be remembered, however, that students reported what they believed they had taken. Studies made in Ann Arbor show that many of the drugs sold on the street are not in fact what they were reported to be by the users. The researchers said, though, that "the student who went into the market place to buy

narcotics tells us as much as we need to know from the very act of purchasing a chemical believed to be a narcotic as he would tell us from his veritable consumption of that compound."

The researchers found that students in Ann Arbor and Chelsea were more likely to use multiple drugs than those attending school in either Willow Run or Dearborn. While Ann Arbor and Chelsea students aged 12, 13, 15 and 17 were about equally likely to report the use of three or more drugs, approximately 40 percent more Chelsea than Ann Arbor 14- and 16-year-olds reported such use.

The most common drugs reported by multiple users were alcohol, soft and hard hallucinogens.

No Chelsea students reported daily use of any drugs. General findings for all four populations were that the median category for frequency of use for alcohol and soft hallucinogens varied from 3-10 times per year to 1-2 times per month, while the median category for frequency of use of all remaining drugs was 3-10 times per year or less.

In the entire sample, the fol-

lowing numbers of students reported using drugs 25 or more times; hard hallucinogens, 41; amphetamines, 29; barbiturates, 22; and narcotics, 18. "If there are adverse consequences associated with the intense use of these drugs, then these students constitute the high risk population with regard to these consequences," the report stated.

It was found that very few students in the four schools indicated that they have used drugs in school. The drugs most likely to be used are amphetamines, soft hallucinogens and alcohol. The researchers found that "it would appear as though amphetamines are used as a means of increasing energy levels in school while soft hallucinogens and alcohol are used for a complex of reasons, including the desire to become more assertive and less bored."

The researchers also attempted to find whether there was a correlation between drug use and knowledge about drugs. They found that in 29 of 30 comparisons in all four schools "those who have used drugs are more knowledgeable about drugs."

"These data serve as a basis for one of three possible inferences about the association between drug information and drug use:

1) The intention to use drugs may lead to efforts to acquire information about drugs as well as efforts to procure the drugs themselves; or

2) Drug use may lead to the accumulation of information about drugs; or

3) The process of undergoing drug education, whether in school or through drug-using peers, may lead to an accumulation of information about drugs which may, in turn, result in drug use."

While the researchers did not select one of the alternatives over the others, they did suggest "that drug information as measured in this research appears not to deter the onset of drug use, and may actually indirectly encourage experimentation with drugs."

However, Dr. Stuart and Miss Schuman found that non-users and younger students seem more likely than older students to translate drug information into a decision to terminate drug use. "Furthermore," the report stated, "it has been shown that the reading of anti-drug literature

may be a more effective educational strategy than lectures opposing drug use, possibly resulting from the more active involvement of students in reading as opposed to attending lectures."

The conclusion of the report underscored the dilemma educators face in attempting to formulate a drug education program. "Given the possibility that drug education efforts may actually intensify drug use, educators in area schools are faced with the difficult decision of whether or not to pursue drug education activities."

Based on findings at Ann Arbor junior high schools, Dr. Stuart and Miss Schuman concluded that "From a statistical standpoint alone (the findings) suggest that anti-alcohol and soft and hard hallucinogen programs would reach the largest number of students with the younger students . . . being the most likely target for programs geared to meet the needs of those students who want to start the use of drugs. Given the size of this target population . . . it would seem as though some form of health education program is essential at this time."

## QUOTE

Soldiers only make risings and riots; there are generals and colonels who make rebellions. —Horace Walpole.

## WEATHER

	Min.	Max.	Precip.
Wednesday, Oct. 20	58	73	0.00
Thursday, Oct. 21	58	73	0.15
Friday, Oct. 22	53	67	0.08
Saturday, Oct. 23	64	80	Trace
Sunday, Oct. 24	56	61	Trace
Monday, Oct. 25	55	61	Trace
Tuesday, Oct. 26	52	62	0.00

By H. K. L.

# The Chelsea Standard

ONE HUNDRED-SECOND YEAR—No. 19

12 Pages This Week

CHELSEA, MICHIGAN, THURSDAY, OCTOBER 28, 1971

15c per copy

SUBSCRIPTION: \$4.00 PER YEAR

## Drug Addiction Film Scheduled Next Monday

According to Dr. Carl D. Chambers, director of research for the New York State Narcotic Addiction Control Commission, "We are either suffering from a nationwide epidemic of mental illness, severe insomnia, and unbearable pain—or people are taking an awful lot of drugs they don't need."

Because there is no single solution to the drug problem, communities are at a disadvantage as to where to begin a program that will both educate the public and eradicate the drug menace. Chelsea is no different from other communities. It has its share of drug addiction along with the indiscriminate use of medication by both young and old.

With this in mind, the Citizens for Quality Education will present a film, "One Minute To Choose!" This documentary was produced by the Cunningham Drug Co., and has been shown twice on TV Channel 50. Chelsea will be the first community in either Washtenaw or Livingston counties to receive it.

Addicts featured in the film are not actors. They were granted immunity from prosecution and, therefore, agreed to be photographed. This is not a lecture-type travelogue. Some may find the film shocking and brutal but it is the truth.

"One Minute To Choose!" will be shown on Nov. 1 to both high school and junior high students. Others will have an opportunity to view it at 8 p.m. in the high school auditorium. Everyone who is concerned about the growing drug problem is urged to see it. If there are any questions as to the contents of the film, persons may contact Mrs. Gary Albrecht, 475-7465 or Mrs. Harold Pennington, 475-5592.

## Festival Choir Selected for Trip to Nassau

Chelsea High school received confirmation Wednesday that the Chelsea High School Festival Choir—a select 22 voice group—has won a place in the International Festival of the Americas to be held in Nassau next April 4 through 10.

In a letter to the high school's director of vocal music, Diane L'Roy, Donald E. McCathern, artistic director of International Festivals of Music said:

"This honor is being extended to you and your choir in recognition of your excellence."

## Blood Bank Seeks Donors For Clinic

Mrs. William Rademacher, coordinator of the Chelsea Blood Bank drive scheduled for Nov. 5, reminds all potential donors that certain health requirements must be met before blood may be donated.

Generally, any person between the ages of 18 and 65 weighing more than 110 pounds is eligible to give blood.

However, people in the following categories are barred from giving, to protect either the health of the recipient or of the donor himself:

Anyone with a history of jaundice or hepatitis, or anyone having close contact during the last six months with people suffering from either disease.

Anyone who has given blood within the last eight weeks.

Anyone with a history of malaria, or any immigrant born in a malarial area.

(Continued on page six)

## Mrs. G. Palmer Elected To Head Friends of Library

Friends of the Library met Monday, Oct. 25 in the club room of the library, and elected a new slate of officers for 1971-72.

Mrs. George Palmer was elected president, Mrs. Lyle Christwell, vice-president, and Mrs. Fred Asmussen, secretary-treasurer.

The Friends presented a gift of programs from the old Chelsea Research Club to the Library to be placed in the archives room.

Refreshments were served by Mrs. Russell Bernath, Mrs. LeRoy (Continued on page six)



1971 HOME COMING QUEEN: Members of the Chelsea varsity football team chose pretty Karin Hume as the 1971 Homecoming queen. Karin received her crown from 1970 Homecoming queen Karen Kelemen Maurer, and her bouquet of roses from master of ceremonies Tim Merkel in an indoor, post-game celebration. One of two senior class candidates, Karin is a varsity football cheerleader, one of the members of the French club planning to fly to Paris during spring break, and a secretary at Palmer Ford on the Chelsea co-operative work program.

## Athletic Shed, Equipment Burns in Fire

A fire, caused by illicit smoking, destroyed the athletic shed at Niehouse Memorial Field and all the athletic equipment stored in it, during a freshman football game Tuesday night.

The fire, which caused a total loss of \$5,300, destroyed \$2,800 worth of athletic equipment, according to athletic director Richard Lapandowski.

"We lost 90 percent of our track equipment, including the hurdles, high jump and 800 pounds of foam," Lapandowski said. The fire also destroyed all the high school's archery equipment.

According to Chelsea police, seven 8th and 9th graders had apparently gone into the shed during the half-time to smoke. They were apprehended by police after fleeing when the fire broke out.

Fire Chief James Gaken said that the fire department was called to the field at 7:57, and had the fire under control within 15 minutes after their arrival.

The department's 14 men and three trucks remained at the field for approximately one hour.

Superintendent of Schools Charles Cameron said no decision has yet been made regarding possible action against the youths responsible for the blaze.

## Kids Halloween Party Slated Saturday Night

The annual kiddies parade and costume contest, a successful Halloween project of the Chelsea Kiwanis club for more than 20 years, will be held again this Saturday, Oct. 30.

Following the official trick or treat period from 5 to 6:30 p.m., costumed ghosts and ghoules will begin gathering in the Municipal Parking Lot at 6:30 for costume judging and the 7 p.m. parade. In case of rain, the event will be moved to the Methodist church basement.

The parade will move from the parking lot down East to Middle St. and from Middle to Main and back to the Municipal Parking Lot. Marching with the parade will be the Junior high school band, and, of course, the Chelsea Fire Department.

Following the parade, at approximately 7:15, costume prizes will

be given to the winners, and cider, donuts and noisemakers will be given to everyone at the parking lot.

Costumes will be judged in four categories again this year: Most Original, Spookiest, Most Typically Halloween, and Funniest, and first, second and third prizes of \$3, \$2 and \$1 will be awarded in each category.

According to general chairman Elmer Kiel, Kiwanians are well prepared for the event. Some 600 noisemakers, 100 gallons of cider and 140 dozen donuts have been ordered. The Rev. Clive Dickens was responsible for obtaining judges, Walt Zeeb procured the cider, and Luther Kusterer was in charge of the cups and donuts.

"We urge all parents to make sure their kids are dressed safely for trick or treating," Kiel said, "We all want this to be a happy Halloween."



WARM WELCOME: Representatives from each area of the Girl Scout program in Chelsea gathered Saturday morning at the home of Mrs. Janet Shaw to congratulate Mrs. Roberta Hinz on her appointment as chairman of the Western Washtenaw Area Association of Girl Scouts. Shown with Mrs. Hinz (left) are Mrs. Shaw, Chelsea troop service director; Mrs. Lilly Worden, Cadette troop committee representative; Carol Hoffman, leader of Junior Troop 47; and Debbie Stinehelfer, leader of Brownie Troop 84.

## Mrs. Herbert Hinz Appointed Area Girl Scout Chairman

Mrs. Herbert A. Hinz, 262 Harrison St., has been appointed chairman of the Western Washtenaw Area Association of Girl Scouts.

Mrs. Hinz said that much of her work will be involved with planning the quarterly area association meetings for all adult Girl Scouts.

The Western Washtenaw Area Association is comprised of nearly 250 adult Girl Scout volunteers working with the 44 troops in Chelsea, Dexter, Saline, and Manchester.

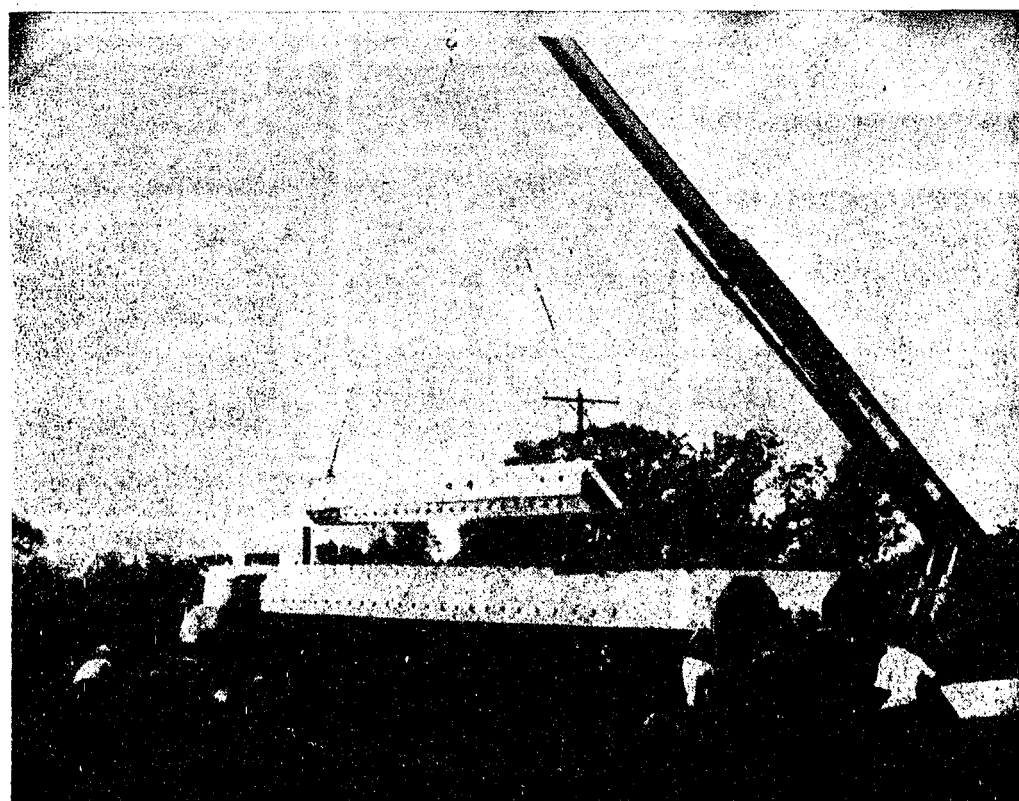
troop committee member for two years, and chairman of the 1971 Father-Daughter dinner.

Mrs. Hinz said that much of her work will be involved with planning the quarterly area association meetings for all adult Girl Scouts.

The Western Washtenaw Area Association is comprised of nearly 250 adult Girl Scout volunteers working with the 44 troops in Chelsea, Dexter, Saline, and Manchester.

One of seven such associations in the Huron Valley Council, the Western Washtenaw Area Association is primarily responsible for planning for the future of Girl Scouting in this area.

Mrs. Hinz has also been active in the Chelsea Community Chest and a block chairman of the March of Dimes for two years, in addition to her involvement in PTO and church activities.



POWER LINE POLES: The first shipments of a new type of pole to be used in the 345,000 volt power line, planned to run from Monroe to the proposed Majestic Station in Dexter, started arriving in Chelsea last week. The poles, which are trucked from the A. B. Chance Co. in Texas, have an average height of 130 feet, weigh approximately 20 tons each, and are placed on reinforced concrete foundations 20 to 30 feet deep. The poles are made of three or four telescoping sections

which have a 49-inch diameter at the base and a 23-inch diameter at the top. The new octagonal poles will be used instead of the usual lattice towers along the line's entire 65-mile route, except where the line changes direction. Edison officials hope the line will be in operation late in 1972. According to Edison's Executive Vice-President for Production, Harold C. Reasoner, the line and the Dexter sub-station are a critical part of the Michigan Power Pool's facilities.

## UF Campaign Reaches 57%

Despite a drop in contributions caused by the wage-price freeze and the now rescinded boycott of the Michigan United Fund by the Sportsman's Alliance of Michigan (SAM), the Chelsea Community Chest has received pledges and contributions totalling \$11,692—45 percent of the goal—by Sunday, Oct. 24.

Sunday's report, however, does not reflect the actual campaign contributions received thus far, James Hoffmeyer, campaign chairman said, since it does not include any rural or residential contributions.

With less than a week remaining in the campaign, Hoffmeyer said that the Industrial division has almost reached 50 percent of its \$17,531 goal. Only one large factory has completed its campaign, and it exceeded its contribution to the 1971 Community Chest.

Hoffmeyer said that he now predicts that the Schools Division will be the only one unable to meet its goal. "The teachers, unlike most other workers in our campaign area, were definitely affected by the wage-price freeze," Hoffmeyer said, "and many of them are—because of increased withholding for taxes—taking home smaller paychecks than they were last year."

San's boycott of the Michigan

United Fund, lifted when the Chelsea campaign was more than a week old, cost the Chelsea Community Chest approximately 15 to 20 percent of the Industrial contributions it might have received, Industrial Division Chairman Conrad Hafner reported.

However, Hoffmeyer said, the other division chairmen reported that the SAM boycott did not seem to have much effect on their areas of the campaign. "At this time we can be guardedly optimistic," Hoffmeyer said. "I think we can predict that we'll come close to our goal, and we may even reach it," Hoffmeyer added. "But we might even have exceeded it had it not been for the SAM action."

Hoffmeyer also said that he felt that the lifting of the ban was "just too late," to make much difference to the Chelsea drive, but he hoped that as people became aware of the change in the SAM

(Continued on page six)

## Tonight's the Night!

The North and South school open houses for parents will be held tonight, Thursday, Oct. 28 from 7 to 8:30 p.m. It was incorrectly reported last week that the open houses would be held Oct. 21. The Standard regrets any inconvenience caused by the error.



## High School Honor Roll

First Marking Period, Oct. 20

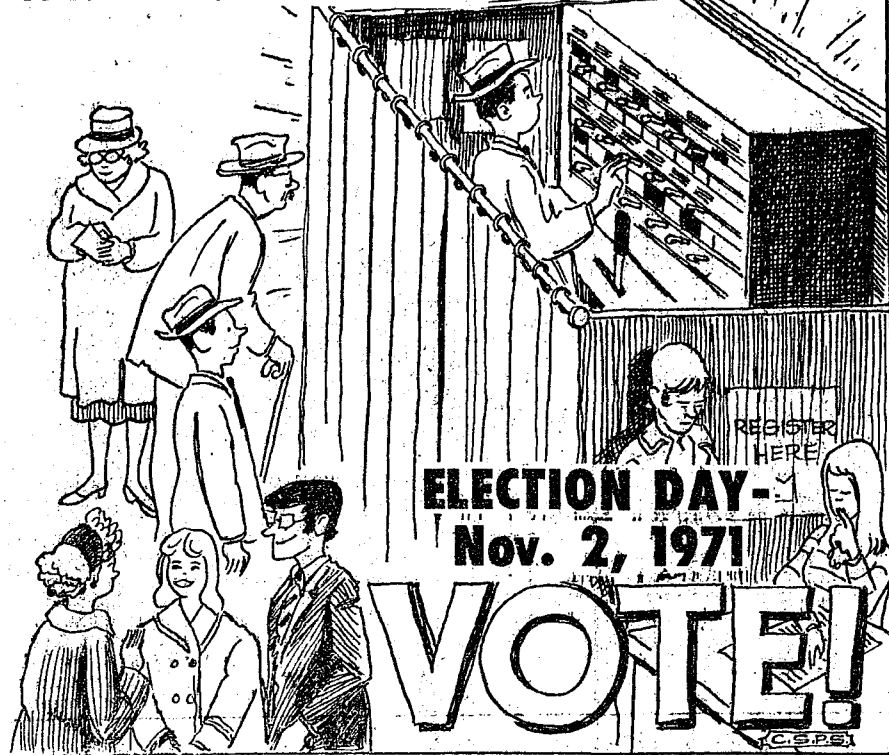
**9th GRADE**—David Alber, Susan Allen, Ann Alter, Thomas Ball, Steven Bennett, Donald Bollinger, Mary Chander, Rebecca Clemans, Ruth Cockerline, Jodi Daniels, Anne Edwards, Sandra Freysing, Teresa Glibreath, Bradley Grant, Timothy Grant, Tammy Goulet, Francis Grohert, Suzanne Hafer, Gregg Haller, Cindy Hook, Merry Hoffmeyer, Janis Hopkins, Ann Kalmbach, Jane Kott, Teresa Lewis, Kim Long, Lois Lovely, Laurie Mann, Maud Murray, Randy Musbach, Andy Nevill, Melinda Padgug, Andy Csinski, Pamela Padgug, Anne Popovich, Shelly Porath, James Powers, David Proctor, Richard Robbins, Debra Rossbach, John Hafer, Lori Schneider, Sharon Miller, Robin Schneider, Lori Hader, Linda Shadon, Linda Mon, Juli Skittenhelm, Brian Smith, Shawn Spaulding, Cheryl Epp, Jill Steward, Elizabeth Tonn, Juanita Trevino, Cindy Turcott, Faye Weirich, Paul Wood, Julia Worden.

**10th GRADE**—Lynette Abraham, Jane Belser, Bill Bollinger, Thomas Boylan, Ann Brauning, Vicki Burnett, Ann Buxton, Paul Case, Mary Clark, Richard Clark, Ronald Clark, Karla Collins, Ronald Clark, Janis Eisenmann, Amy Ender, Gloria Fish, Nancy German, Edward Haselschwardt, Margaret Worth, Mark Heydlauff, Loretta Huts, John Houle, Phyllis Jedele, Nancy Jennings, Vickie Joseph, David Klemmer (all A), Dale Koch, Jennifer Lane, David Laubon, Jon Lewis, Mary Linebaugh, Karen L.

Lewis, Mary Linebaugh, Karen Linperfelt, Michelle McClear, Brenda McGuire, Ann Merkel, Michael Nau, Jan Nevill, Denise Nutt, Deborah Orlovski, Suzanne Qsinski, Susan Ottomano, Margery Parsons, Kevin Passow, Jill Peterson, Janice Powers, Jill Quackenbush, Marlene Raney, Kathie Reilly, Pamela Risher, Darlene Robbins (all A), Debra Rooke, Lynne Roskowski, Kathryn Rybka, Gena Shoemaker, Julie Smith, Patricia Spencer, Jeffrey Sprague (all A), Kathleen Stoll, Susan Stoner, Stephen Straub, Jennifer Tandy, Robert Terns, David Tucker, Polly Van-Slambrouck, Mary Verchereau, Carol Warywoda, Robert Weir.

**11th GRADE**—Ronald Adams, Stephanie Aldrich, Craig Alter (all A), Patricia Ball, Jeanette Bauer, Florence Beach, Elizabeth Belser (all A), Daniel Bertke, Judith Blaess, Barbara Boylan, Heather Brooks, Bruce Burr (all A), Phyllis Buss (all A), Danise Bycraft, Cheryl Cameron, Jennell Caudill, Donna Clark, Dennis Cosgrove, Jeffery Daniels, Carole Dietle, Robert Elliott, Ellen Evans, Carol Ewald, Carol Fairbrother (all A), Lee Ferguson, Sally Gaken, Gilda Gillespie, Luther Haab, Jeryl Hafner, Dennis Hugel, Keith Hume, Timothy Johnson, Nancy King, Diane Klemmer (all A), Peggy Kraai, Margaret Lancaster, Debra Lyons, Kris Machlanski, John Norris, Shirley Newcome, Debra Norris, Randall Norton, Carolyn O'Connor, Joyce Peterson, Alicia Pierson, Cynthia Powell, Vickie Prater, Connie Salyer, Norman Schaefer (all A), Robert Schneider, Phyllis (Continued on page three)

## A "political machine" we can't live without...



## ★ MICHIGAN MIRROR ★

By Elmer E. White, Secretary, Michigan Press Association

### Reform Pushed

Thus far Michigan's prisons have remained untouched by the unrest which has hit other prisons around the country.

That doesn't mean, however, that state officials aren't working to improve the existing system. State Corrections Director Gus Harrison is pushing hard for a multifaceted revamping of the state's corrections system.

The first thing needed he says is closer control on the prison population so that "only those who are genuine threats to society take up prison housing."

This population control would come about through two steps. The first is a revision of the criminal code to eliminate some outdated and excessive sentences and to provide for indeterminate sentences for those who respond to a brief period of incarceration.

The second aspect of prison population control involves a screening of convicted persons before they are sentenced. This step would be similar to the examination they now receive when they go to prison after being sentenced.

"Where this practice has been used elsewhere, it has prevented some unnecessary prison commitments," Harrison says. Legislation would be needed to allow this to occur.

Also needed, Harrison says, is improvement of the state's physical plants for correction such as the Southern Michigan Prison at Jackson, the State Reformatory and the Marquette Prison.

### Florida Man Arrested Here for 'Borrowing' Motorcycle in Pontiac

Chelsea police arrested a Lake Worth, Fla., man for unlawfully taking away and using a motorcycle belonging to a Pontiac man Thursday, Oct. 21.

Chelsea police arrested John Henry Patton, 26, a resident of the Sylvan Motel, on a warrant issued by the Pontiac Post of the Michigan State Police.

Patton had "borrowed" a 1968 Honda belonging to Patrick Kelly of Pontiac more than a week before his arrest. Chelsea police had stopped Patton for a defective tail light on Oct. 15, but the motorcycle had not yet been reported as missing.

Following his arrest at 1:40 a.m., Patton was turned over to the Washtenaw County Sheriff's Department to await pick-up by officers of the Pontiac State Police Post.

Of the 14,742 students attending Central Michigan University this fall, about 98 percent are Michigan residents.

"Most of the recent prison problems around the country have been occurring in prisons that are too old and too large," he says. "These present increasingly serious liabilities to any prison system."

The ideal situation, according to Harrison, would have a maximum population of 800 prisoners in any one prison. By comparison, the Jackson facility now houses about 4,600 prisoners.

Also needed, he says, is a state prison for women.

"The Detroit House of Correction is not a satisfactory facility," Harrison says. "The state should provide its own institution for female offenders."

Just as important as the above is a need for changes in the correctional activities carried on by the prison system, he says.

Suggested changes include an expansion of prison industries, opening up of jobs for prisoners when they are released, better schooling for prisoners, establishment of community residential centers to help ex-convicts adjust back to society outside prison and a state-wide probation service.

"If job experience in prison is to pay off, men must not be barred from employment on release," Harrison says. He suggests a re-evaluation of areas in which criminal records can bar a man from employment.

After all, if a man cannot earn a living when he leaves prison, chances are he'll be back.

### Bicycle Plan Peddled

If State Rep. Richard Allen had his way, the state would establish a system of hiking, biking and horseback riding routes throughout the state.

The Ithaca Republican introduced a bill in the House to establish these routes to enable people to "get away from it all."

To dramatize his bill, he made a 250-mile bicycle journey from Lansing to Mackinaw City prior to the Labor Day week-end to try to drum up support.

"I think it's only right that we provide a place for people who want to engage in riding a bike or hiking to enjoy these pursuits," he says.

## MONEY TROUBLE? ONE PLACE TO PAY!

Credit Management Service  
662-2565  
215 South Fifth Ave.  
Ann Arbor  
State Licensed and Bonded

## IF YOUR ROOF IS HURTIN' Call Burton!

- ★ Old and New Roofs
- ★ Hot Tar and Metal Roofs
- ★ Aluminum Siding
- ★ Aluminum Awning and Storm Doors and Windows
- ★ Seamless Aluminum Eaves Troughs and Down Spouts
- ★ Mobile Home or Trailer Skirting

## COOPERATIVE ROOFING & SIDING CO.

Call 662-5900 or 662-3288  
Evenings Call Burton Rathburn, 663-0754

## JUST REMINISCING

Items Taken from the Files of The Chelsea Standard

### 4 Years Ago...

Thursday, Nov. 2, 1967—

Walter M. Seitz of Dearborn, son of Mrs. Emma Seitz of 304 E. Middle St., died Wednesday, Oct. 25, as the result of an accidental shot fired from a .22 caliber rifle in the hands of a 15-year old Salem township boy. At the time of the mishap, Seitz was picking apples on the Malcolm E. Ratliff farm. According to reports of the incident, the rifle shot was accidentally fired as the boy was preparing to take a turn at target shooting. The two boys shooting told officers that they were unaware anyone was in the orchard.

Bruce Parks, son of Mr. and Mrs. Vernon L. Parks, 169 E. Summit St., received his Eagle rank, scouting highest award, during a special Eagle Court of Honor convened by Troop 470 Saturday night at the Chelsea Congregational church. Also honored during the evening were troop members earning 47 merit badges between them. The badges were won by David Eardley, Lloyd Hafner, David Heydlauff, Robert Heydlauff, Don Lofquist, Bruce Parks, Jeff Reed, Jeff Schmidt and Peter Stahl. Robert Daniels noted that Don Lofquist's total of 14 merit badges set a troop record.

The Chelsea Bulldogs lost their last possible chance for the league championship Friday night as Saline over-powered Chelsea, 19 to 0. Both teams were hampered by the wet field, but Chelsea's offense, which had averaged 250 yards for the past three games, was completely stalled, as it had a net yardage of 85. The Bulldogs play their final game at Dexter tomorrow night.

### 14 Years Ago...

Thursday, Oct. 31, 1957—

It's Halloween and 23 windows of Chelsea businesses bear evidence of that fact. The windows were painted by fourth through eighth graders participating in a window painting contest sponsored by the Chelsea Kiwanis Club. Prizes of \$4, \$3, \$2 and \$1 were distributed to winners in each of three age groups. Tonight the Kiwanis club will hold its annual Halloween party and parade at 6:30 p.m.

The R. V. Seaman Co., of Detroit, has started construction on

a bulk plant for the Sinclair Refining Co., which will be owned and operated by Dillman Wahl at 6884 Clear Lake Rd. Wahl, who has been a Sinclair driver-salesman for 15 years, will now be a commissioned marketer, and will handle a complete line of the company's products.

Four representatives of the Chelsea Co-Operative Nursery were in Ann Arbor Tuesday for Chelsea Co-Operative Nursery board meeting. Attending from Chelsea were Mrs. Charles Powers, Chelsea Co-Operative Nursery state representative, Mrs. Paul Boehler, Mrs. Raymond Schairer, and Mrs. Keith Poulson.

Two Chelsea students at Michigan State University have achieved All-A academic grade point averages during the spring and summer terms. Nancy Atkinson, daughter of Mr. and Mrs. George Atkinson, is a sophomore majoring in elementary education. Constance Steinbach, daughter of Mr. and Mrs. Martin C. Steinbach, is a junior majoring in social science.

### 34 Years Ago...

Thursday, Oct. 30, 1947—

Showing championship mettle with the chips down in the fourth quarter last Friday night, the Chelsea Bulldogs roared from behind to whip a scrappy U. High team, 26 to 20, before the smallest crowd to date this year at the local field. It was a thrilling crowd-appealing game all the way, and instead of the defensive battle which was expected, it became a typical story-book contest, especially Chelsea's whirlwind finish to win. Hafley, Slane, Miller, Vogel, and Baldwin led Chelsea to the win.

More than 400 people turned out for the annual 4-H Achievement

ment program of Washtenaw county 4-H clubs held last Tuesday at the Masonic Temple in Ann Arbor. H. S. Oser presented awards to the following Chelsea area winners of the county-wide contests. Norwin Lesser, Dexter, meat animal champion; Dean Schweinfurth, Grass Lake, tractor champion; Helen Ruhlig, Dexter, clothing; Donna Kalmbach, Chelsea, dress revue; Doris Downer, Chelsea, food preparation; Linda Bradbury, Dexter, girls' record and poultry; Donna Fowler, Chelsea, special baking contest; and Barbara Collier, Chelsea, home management.

Walter Mohrlock bagged a 1,600 pound bull moose during a two week hunting trip to Long Lac in Ontario, Canada. Accompanying Mohrlock on the trip were Mrs. Mohrlock and Mr. and Mrs. Arnold Steger. Mohrlock shot the moose on the first day of the hunt, approximately two hours after he and Mrs. Mohrlock left camp.

### 24 Years Ago...

Thursday, Oct. 28, 1937—

Walter Grant, son of the Rev. Martin Lee Grant, former pastor of the Chelsea Congregational church, was captured while fighting against Franco's Fascists in Spain. His family thought Grant had gone to Spain last December as a war correspondent for a minor New York newspaper. Press reports said Grant was captured by insurgent Spanish forces along with 17 other men fighting for the Loyalist cause. Dispatches said that Grant had been fighting with the Abraham Lincoln brigade, a unit of men in sympathy with the Spanish government.

The first Chelsea Community Fair, sponsored by the Kiwanis Club and the FFA will be held Saturday, Nov. 13 at the public school auditorium. Admission will be free, and premiums will be awarded. All entries must be in place by 9 a.m. Saturday.

## Uncle Lew from Lima Says:

DEAR MISTER EDITOR:

Ever now and then, the fellow at runs the country store cuts me up out of the magazines he has, and he passes em on to the others for their discussions. Saturday night, he has this clipping of an ad run by the Oregon Department of Parole and Probation. The ad was for aids to work in the department.

What struck the store feller's eye was that the ad said "in order

to qualify the applicant must have been convicted of a felony within the state of Oregon, and have been confined in a state penal institution." The store feller said he allus had heard the only way to get ahead in the game was to be born with 40 year experience but he allowed this was the first time he had saw where being a ex-convict was a advantage in getting a job.

Actual, said Ed Doolittle, when you think about it the ad makes a lot of sense. What better way to understand the problems of convicts than to be one of 'em, ask Ed, and what other line of work is a ex-convict better prepared for? It looked to Ed like a all-around good idea, and it is to bad that we don't use that same way to fill other jobs.

Per instant, Ed went on, he saw where the Army spent \$11 million running ads for soldiers, but they didn't try the experience angle on the boys. The ads got 4,000 recruits, the Army said, and that figured out to somepon like \$2,600 for each man. If the Army will pay that kind of money jest to get it in, said Ed, think how tickled the Army would be to keep them that's got experience.

The trick is to get the fellers that's been in the Army to go back in with the idee of changing things fer the better, Ed said, like cutting out KP and working on weekends. Ed said he would admit it's a heap easier to make the Army better than prison, but the experience angle would work jest as good.

Clem Webster said it was funny to him that a feller can't be a plumber unless he's got five year experience as a plumber, but he can get elected to any office without no experience at all. The only time we place any value on political experience, Clem said, is when our feller is in office and has got it. If we're trying to get our feller in office, he don't need it, was Clem's words.

General speaking, agreed Ed, you can't figger angles. Ed reported where a judge in Virginia fined a youngster \$100 and sentenced him to sit on a hogpen and look at the hogs fer calling a policeman a pig. Ed figgered the boy probable was thinking how sticks and stones jest break bones, but words got him in a heap of trouble.

Personal, I give up on angles. I saw where this feller voted for the state to raise all road signs two feet, cause he said if the job was left to the Federal Government they'd lower the roads two feet.

Yours truly,

Uncle Lew.

### Howell

### Livestock Auction

The Wise Owl Sows Ship to Howell  
SALE EVERY MONDAY, 2 p.m.  
Phone 546-2470, Bim Franklin  
Mason 677-8941

### Market Report for Oct. 25

#### CATTLE—

Good to Choice Steers, \$32 to \$33.50  
Good Choice Heifers, \$29 to \$31  
Fed Holstein Steers, \$26 to \$30  
Ut.-Stk., \$26 and down.

#### COWS—

Heifer Cows, \$24 to \$26  
H.-Commercial, \$21 to \$24  
Canner-Cutter, \$18 to \$21  
Fat Beef Cows, \$18 to \$22

#### BULLS—

Heavy Holstein, \$27 to \$29  
Light & Common, \$25 and down.

#### CALVES—

Prime, \$32 to \$48  
Good-Choice, \$28 to \$42  
Heavy-Dressed, \$40 to \$45  
Cull & Med., \$30 to \$40

#### FEEDERS—

300-400 lb. Good to Choice Heifers, \$26 to \$30  
400-700 lb. Good to Choice Steers, \$24 to \$27  
200-300 lb. Holstein Steers, \$25 to \$31  
500-600 lb. Holstein Steers, \$25 to \$28  
Commercial-Med., \$25 and down.

#### WHEAT—

Wooled Slaughter Lambs:  
Choice-Prime, \$26 to \$28.25  
Good-High, \$22 to \$26  
Slaughter Ewes, \$6 to \$10  
Feeder Lambs, all weights, \$22 to \$25

#### HOGS—

200-250 lb. No. 1, \$16.75 to \$20.00  
250-300 lb. and up, \$14.50 to \$19.75  
250 lb. and up, \$12.50 to \$18.50  
Light Hogs, \$15 and down.

#### SWINE—

Finest Light, \$17 to \$17.50  
200-250 lb. \$18.50 to \$19.75  
500 lb. and up, \$16 to \$16.50

#### Beats and Stags—

All Weights, \$14 to \$16.50

#### Feeder Pigs—

Per Head, \$8 to \$15

#### HAY—

1st Cutting, 60c to 90c  
2nd Cutting, 50c to \$1.20

#### STRAW—

Per Bale, 50c to 65c

#### COWS—

Tested Dairy Cows, \$300 to \$450  
Tested Beef Type Cows, \$150 to \$250

Established 1871

The Chelsea Standard

Telephone GR 5-3581

Excellence Award By Michigan Press Association

1951-1952-1960-1964-1965-1966

Walter P. Leonard, Editor and Publisher

Published every Thursday morning at 800 North Main Street, Chelsea, Mich. 48118, and second class postage paid at Chelsea, Mich., under the Act of March 3, 1879.

### ADDRESS CORRECTION REQUESTED

Subscription Rates (Payable in Advance)

In Michigan:	Outside Michigan:
One Year \$4.00	One Year \$6.00
Six Months \$2.25	Six Months \$3.50
Single Copies \$ .15	Single Copies \$ .20

Service men or women, anywhere, 1 year \$4.00

MEMBER

NATIONAL NEWSPAPER  
Associated with the Publishers

National Advertising Representative

MICHIGAN NEWSPAPERS, INC.

257 Michigan Ave.

East Lansing, Mich. 48824

# WE WROTE A BOOK THAT SHOWS YOU HOW TO SAVE ON ONE OF THE BEST BARGAINS IN YOUR HOME.

Read "The Great Escape," Michigan Consolidated Gas Company's free booklet that shows you how to save Gas and money.

It's the great escape of heat from your home that may be wasting Gas every month.

You use Gas to heat air and water. But chances are that your home is letting some of that heated air and water escape before it does its job.

That's why we wrote "The Great Escape." Because by checking and correcting the ways heat escapes from your home, you can

make Gas (already one of today's big bargains) an even bigger bargain.

Fill out the coupon below, and learn how to foil the great escape—and save Gas and money, too. Or pick up a copy of "The Great Escape" at any of our offices.

## The Great Escape

MICHIGAN CONSOLIDATED GAS COMPANY  
211 E. Huron Street, Dept. GS  
Ann Arbor, Michigan 48107

As a customer of Michigan Consolidated Gas Company, I would like to receive a free copy of "The Great Escape."

NAME \_\_\_\_\_  
ADDRESS \_\_\_\_\_  
CITY \_\_\_\_\_  
STATE \_\_\_\_\_

MICHIGAN CONSOLIDATED GAS COMPANY

The future is great with Gas!



## SOUTH ELEMENTARY SCHOOL NOTES



From Helping Teacher, Mrs. Beaudin  
Our playground has a new look thanks to the artistic talents of Douglas Troyer. Mrs. Troyer organized the decorating of the concrete tiles on the kindergarten, first and second grade playground. She thoughtfully allowed the children to express their own artistic talents by taking a representative in each of the K, 1, 2 grade classes and having them draw their designs with chalk. She then had four children from the third, fourth and fifth grades paint the signs with permanent paint. Due to the influence of Halloween, we have many spooky inside our concrete tiles. Our thanks to Mrs. Troyer, her sister and all the children who helped her, for making our playground a more attractive place.

Music Teacher: Mrs. Veenkant  
Reporters: All the children  
The third, fourth and fifth graders have been busy learning new songs. If we want to practice, we can ask Mrs. Veenkant for a song book to use. In fourth and fifth grade chorus we have been working hard on Christmas music. We will present a school assembly of Christmas music the week before Christmas. Miss Patrick and Mrs. Hawley, student teachers, have been teaching us some of our Christmas songs. Next week is Halloween, and we will celebrate in Music Class by listening to special Halloween music and singing Halloween songs. Mrs. Veenkant hopes many parents will stop at the music room the night of Open House and say hello.

THIRD GRADE—  
Room 11  
Teacher: Mrs. Richardson  
We've had a few birthday parties so far this year: Mike Wade, Mrs. Kvarnberg and Pat Luck. Our teacher was married Oct. 22. We had a surprise shower for her. There were lots of presents. We're studying reading, math, social studies, science, cursive handwriting and spelling this year. We've all had a chance to work in our classroom bulletin board. Boys and girls from the high school Advanced Speech class have visited us with programs about safety, American Indians, and Personal Hygiene. We painted with water color in our art class last week. Lori Kornel recently joined our class. We're glad to have her.

Room 16  
Teacher: Mrs. Schmidt  
Reporters: Anita Powell and Marcia Warren  
Our class has been studying the United States. Each student has put out a state for our map and written about it. We have a mural on American homes, and the following people helped to make it: Scott Chapman and Eric Headrick made log cabins; Sandy McLaughlin and Jeff Jones made a house by the lake; Marcia Warren and Sandra Allen made a brick house; Carol Harvey made a home in the country; Jane

Lantis and Kenneth Lindstrom made a trailer home; Anita Powell and Daphne Fletcher made an apartment house. Scott Chapman has shown his bug collection and his arrowhead collection. Sandy McLaughlin and Sharon Parsons have both shown their shell collections. Marcia Warren brought her kitten, and Kenneth Lindstrom brought two of his puppies.

Room 13  
Teacher: Mrs. Yager  
Reporter: Susan Siebert  
In our third grade class we are studying nutrition. We are learning the four food groups, and we are making posters. (We are getting ready for Open House. We are going to make folders of our work. Halloween will soon be here, and we will be ready! We are going to have a party. We are making witches, pumpkins, and ghosts.

FOURTH GRADE—  
Room 22  
Teacher: Mrs. Meadows  
Reporters: Steve Kvarnberg, Patti Shoemaker, Beth Wireman, Julie Botsford  
We are having a fun time in art. We have been painting a lot of pictures with water colors. Mrs. Wahl has been showing us how to make cylinders and other shapes. She has also taught us to make baskets and window masks. We have music on Thursdays at 1:40 to 2:20. We have chorus on Fridays. Mrs. Veenkant is teaching us some new songs. We enjoy our music classes very much, because we learn all different kinds of songs. In geography we are studying about Japan. We have a display table with all sorts of Japanese things. There is a doll that has all different wigs. We have one thing called the Japanese Lucky Tree. Another thing is a Japanese flag. Our teacher said that maybe we could make mats, and she would cook a Japanese meal. We would sit on the mats.

We really enjoy our gym class with Mr. Wehrwein. We are learning lots of skills and activities such as: passing footballs, broad jumping, foot races and many other things.

Room 20  
Teacher: Mrs. Moore  
Reporter: Jimmy Fuels  
Mrs. Wahl, our art teacher, is showing us how to make a mask with paper mache. We will finish them before Halloween. Maybe we'll wear them or use them for decoration. Tammy Sabo is doing an experiment for the class to demonstrate the behavior of air pressure and cold and warm air.

The class has been working on a light-sound project related to the eye and ear. Mrs. Moore brought her land snail, Simon, to visit. She has had him more than a year. (We have started our long division in math.

FIFTH GRADE—  
Room 19  
Teacher: Mrs. Fuels  
Reporter: Lori Inbody  
In social studies we studied about Indians of North America. We went to the Ann Arbor Mu-

## Cross Country Frosh Runners Show Strength

Chelsea's cross country runners won one and lost one in two away meets last week. On Tuesday, Oct. 19, Chelsea defeated Grass Lake by a score of 16 to 49. Dan Hoover finished first for Chelsea with a time of 14:26. Dave Buxton finished second with a time of 14:33, and Mike Agopian finished third with a time of 14:46.

Also placing for Chelsea were Robin Boyer, fourth, in 14:56; Jon Schenk, sixth, in 15:08; Jim McGinn, seventh, in 15:10; and Howard Schenk, ninth, in 15:37.

On Thursday, Chelsea lost to Saline by a score of 18 to 37. Jeff Lewis finished first for Saline in 18:00 flat.

Due to the fast course at Saline, all the times were exceptionally good, with all Chelsea runners turning in their best times of the season.

First finisher for Chelsea was fourth place Dave Buxton with a time of 13:34. Dan Hoover finished sixth with a time of 13:54; Mike Agopian, eighth in 14:20; Howard Schenk was ninth with a time of 14:27; Robin Boyer placed 10th in 14:33; Jim McGinn placed 11th, with a time of 14:51; Jon Schenk placed 12th in 14:54; Lee Ferguson placed 13th, in 15:08 and Ken Buxton placed 17th in 16:24.

"I was especially impressed with the performances of our three freshmen, Agopian, Boyer, and Howard Schenk, turned in," cross country coach Pat Clarke said. "They were very good for freshmen."

Chelsea had its last dual meet Monday, Oct. 25, running against St. Thomas High school in Ann Arbor. On Saturday, Oct. 30, Chelsea will run in the state regional meets to be held in Blissfield. Unless some Chelsea runner progress beyond the regionals, Chelsea will close out its cross country season on Nov. 3 with an unofficial "League Quadrangular" meet with South Lyon, Saline and Dexter.

seum and learned many things about them. We drew murals on the Aztec, Northwest, Plains, the Woodland, and the Southwest on how they lived.

We learned the poem People by Lois Lenski and drew pictures to illustrate it.

Room 17  
Teacher: Mrs. Hightower  
Reporters: Debbie Campbell, Susan Heller, Billy Maynard

This Wednesday we made paper mache masks for Halloween. First of all we rolled up newspaper. Then we fitted the paper around our heads. We made some sort of plaster glue.

The safety boys of South school have been working hard for the children's safety. They have been on duty in rain, sun and hail. The captain is John Whitaker and the lieutenant is Bryan Herrick.

Room 24  
Teacher: Mrs. Senne

Damian Marzee and Mike Robbins presented a science lesson to the class in which they used an electro-magnet which they had made. This reinforced our spelling assignment this week and helped us to understand some of our words. Don Hulett brought the battery from home.

Patrol girls were complimented by our early elementary playground supervisor, Mrs. Hastings, on their excellent care of children during the noon recess.

## JV Gridders Snap Back for Dundee Win

After a disappointing loss to Novi last week, Chelsea High school's Junior Varsity snapped back to defeat Dundee, 28 to 6, last Thursday, boosting their record for the season to five wins and one loss.

Chelsea received the kick-off and drove 72 yards in 15 plays for their first score of the game. Jeff Marshall made the one-yard dive for the TD, and Ishmael Pickelsimer kicked the extra point.

Dundee turned Chelsea's kick-off into a touchdown run, their only one of the game.

During the second quarter, Dale Poertner scored on a four-yard run to make the score 13 to 6, and Ishmael Pickelsimer faked a kick and ran with the ball, getting the two extra points.

Mike Nadeau received a pass from Jeff Marshall and ran 24 yards for a TD, Ishmael Pickelsimer again kicked the extra point and Chelsea led, 22 to 6.

Chelsea scored their last touchdown in the third quarter on a six-yard run by Dale Poertner.

According to JV Coach John Schaffner, "Defensively we had a great team effort, as the Chelsea offense had the ball most of the night."

Good defensive contributions were made by Jack Hackworth who recovered a Dundee fumble in the second quarter, Howard Haselschwardt, who recovered another Dundee fumble in the third quarter, Art Paul who recovered a fumble in the fourth quarter, and Steve Schanz who intercepted a pass deep in Dundee territory during the fourth quarter. Chelsea's defense held Dundee to a total offensive gain of 30 yards.

## High School HONOR ROLL

(Continued from page two)

lis Shadoan, Stephen Siebert, Richard Stewart, Karen Sullivan, Rebecca Timb, Reatha Treado, Janet Wackenhut, Connie Wireman, Mary Wood, Steven Worden, John Young.

12th GRADE—

Nancy Aldrich, Joseph Aspiranti, Jeanette Bailey, Debra Barker (all A), Therese Blacklaw, June Blalock, Dwight Bolanowski, Mary Jo Bott, Andrea Brier, Melvin Buss, David Buxton, Cynthia Chandler (all A), Dana Check, Catherine Clark (all A), Garry Collins, Mark Collins, Susan Dirham (all A), Barbara Duerr, Angeline Eder, Patricia Eisele, Terri Eismann (all A), Steven Flint, Molly Foster, Sherree Freeman, Daniel Gaunt (all A), Grets Graham, Judith Grau, Derrick Harris, Jeanne Haselschwardt (all A), Michael Hergert, David Hess, Daniel Hoover, Kathy Hopkins, Larry Hopkins, Lynn Houle, Richard Howard, Karen Johnson, Marsha Johnson, Larry Jones, (all A), Janice King, Steven Knickerbocker, Edwin Koenigter, Kenneth Kusterer, Dennis Landwehr, Charles Lane (all A), Kathy Leach, Thomas Lixey, David Lukasik, Sheri McClain, Janice McGaw, Anne McKernan, Robert Mester, Daniel Miller, Jacquelin Murphy, Katherine Murray, Mary Niehaus, Joseph O'Neill, Connie Orlovski, Gregory Osborne, Joan Ottoman, Vicki Padgham, Keith Pfeifle, Joan Platt, David Porath, David Powers, Laurel Prinzing, Chris Rasmussen, Cynthia Reynolds, Gayle Robbins (all A), Michael Rossbach, Robert Rutherford, Roberta Sawyer, Karen Schafer (all A), Kathryn Schafer, (all A), Schenk, Jackie Schiller (all A), Dean Schoenberger, Janice Schramm, Janet Sibley, Betty Snyder, Michael Spence, Todd Sprague, Martin Straub, Ronald Sweeney, Thomas Thornton, Douglas VanGorder, Tim VanSlambrouck, Ruth Verbeure, Norbert Weber, Wayne Welton, Thomas Winans, Robert Wojcicki, Gene Wonders.

# Jiffy market

BIG ENOUGH TO SERVE YOU.....SMALL ENOUGH TO KNOW YOU!

Corner of SIBLEY & WERKNER RDS.....CHELSEA, MICHIGAN

7 AM - 10 PM  
OPEN 7 DAYS A WEEK!  
PHONE 475-5701

COMPLETE SUPER MARKET

SALE PRICES EFFECTIVE THURSDAY, OCT. 28, THRU SUNDAY, OCT. 31, 1971.

Store Hours Are 7 a.m. to 10 p.m. 7 Days A Week

<p><b>ROUND STEAK</b> Full Cut Round \$1<sup>09</sup> lb. Top Cut Round \$1<sup>19</sup> lb.</p>	<p>U.S.D.A. CHOICE</p> <p><b>BONELESS RUMP ROAST</b> \$1<sup>19</sup> lb.</p>	
	<p>U.S.D.A. CHOICE</p> <p><b>SLAB BACON</b> 45¢ lb.</p>	<p>ECKRICH SLICED BOLOGNA</p> <p>1-Lb. Pkg. <b>89¢</b></p>
<p>U.S.D.A. CHOICE</p> <p><b>SLICED BACON</b> 59¢ lb.</p>		

**JIFFY MARKET**

## FRESH BAKERY

Pies - Cakes - Rolls - Cookies  
Bread - Cup Cakes - Donuts - Others

Old German Pretzels Wed. & Sat. Afternoons.

**DANDY DONUTS**

Plain Cinnamon Sugared **59¢ doz.**

**FRESH MERCHANDISE ARRIVES 1 P.M. EACH AFTERNOON.**

CALL 475-5701  
SPECIAL ORDER  
CAKES 2 DAYS

<p>POPS RITE</p> <p><b>POPCORN</b> Yellow or White 4-Lb. Bag <b>59¢</b></p>	<p><b>COCA-COLA</b> 16-Oz. No-Return Bottles Equals 1 Gallon <b>99¢</b></p>	<p>CRISPY FLAKE</p> <p><b>POTATO CHIPS</b> 13-Oz. Pkg. <b>49¢</b></p>
<p>BORDEN'S</p> <p><b>CREAMORA Instant Cream</b> 1-Lb. Jar <b>69¢</b></p>	<p>LIBBY'S</p> <p><b>SAUERKRAUT</b> 1-Lb. Can <b>10¢</b></p>	<p>STARKIST</p> <p><b>CHUNK STYLE TUNA</b> 6 1/2-Oz. Can <b>35¢</b></p>
<p>LIBBY'S</p> <p><b>DEEP BROWN Pork &amp; Beans</b> 1-Lb., 15-Oz. Can <b>19¢</b></p>	<p>COLORFUL - WASHABLE</p> <p><b>SCATTER RUGS</b> 19" x 33" Each <b>89¢</b></p>	

# OXYDOL

Giant Size 49-Oz. Box **79¢**

## EASY MONDAY SALE

<p><b>FABRIC SOFTENER</b> 1/2 GAL. <b>49¢</b></p>	<p><b>SPRAY STARCH</b> 1 GAL. <b>69¢</b></p>	<p><b>PINK DETERGENT</b> 1/2 Gal. Bottle <b>49¢</b></p>
---	--	---

SPECIAL SALE FOR THE KIDDIES!!!

**From the Borden's Ice Cream Co.**

— A SUNDAE IN A DRUMSTICK —

## DRUM STICKS

6 pac **49¢**

## DAILEY'S PICKLES

<p><b>POLISH DILLS</b> 1/2 Gal. Jar <b>69¢</b></p>	<p>Sweet Cucumber Slices 16-Oz. Jar <b>35¢</b></p>	<p><b>POLISH DILLS</b> 1 Qt. Jar <b>49¢</b></p>
--	--	---

EVERY DAY AFTER DAY LOW PRICES!!

**RISDON'S MILK**  
Kleen-Maid BREAD  
1 Gal. Crtn. **89¢**  
1-Lb., 4-Oz. Loaf **19¢**

## MAXWELL HOUSE Coffee

1-Lb. Can **79¢**

## MARATHON GAS PUMPS

Gas as well as Groceries - Meats - Beer - Wine - Bread - Pop - Ice Cream - Household Items  
Milk - All at Everyday Low Supermarket Prices!

**MARATHON REGULAR GAS**  
Includes All Taxes **33.9¢ gal.**

**MARATHON PREMIUM GAS**  
Includes All Taxes **37.9¢ gal.**

It's Getting Cold!

## PRESTONE ANTI-FREEZE

**\$1<sup>79</sup> Gallon**

GAS PUMPS & STORE OPEN 7 a.m. to 10 p.m. 7 Days a Week



See the Shocking

## "ONE MINUTE TO CHOOSE"

at

**CHELSEA HIGH SCHOOL AUDITORIUM**

## MONDAY, NOV. 1

at 8:00 p.m.

It May Save A Life!

Sponsored By

**CITIZENS FOR QUALITY EDUCATION**

## SPECIAL HALLOWEEN CANDY

Reg. Retail - 39c .....With 4 Pages Pantry Stamps 19c  
Reg. Retail - 49c .....With 4 Pages Pantry Stamps 29c  
Reg. Retail - 59c .....With 4 Pages Pantry Stamps 39c  
Reg. Retail - 79c .....With 4 Pages Pantry Stamps 49c  
Reg. Retail - 99c .....With 4 Pages Pantry Stamps 69c

Lo Fat

## MILK

1 Gal. Crtn. **67¢**

OPEN from 6 a.m. to 11 p.m. Every Day.  
OPEN SUNDAYS for Your Shopping Convenience

## GALLUP-SILKWORTH PUMP & PANTRY

295 S. Main St., Chelsea Phone 475-7051

Ads  
Taken  
Till 5 p.m.  
Tuesday

IT'S EASY TO  
BUY-SELL-RENT-  
HIRE & FIND WITH

**WANT ADS**

Just  
Call  
GR 5-3581

### WANT ADS

#### The Chelsea Standard

##### WANT AD RATES

PAID IN ADVANCE—All regular advertisements, 50 cents for 35 words or less, each insertion. Count each figure as a word. For more than 35 words add 2 cents per word for each insertion. "Blind" ads or box number ads 50c extra per insertion. CHARGE RATES—Same as cash in advance, with 15 cents bookkeeping charge if not paid before 6 p.m. Tuesday preceding publication. Pay in advance, send cash or check and have 15 cents. DISPLAY WANT ADS—Rate \$1.10 per column inch, single column width only. 5-point and 14-point light type only. No borders or headlines (type, minimum 1 inch). CARDS OF THANKS OR MEMORIALS—Single paragraph, 50c. \$1.00 per insertion for 30 words or less; 2 cents per word beyond 30 words. COPY DEADLINE—5 p.m. Tuesday week of publication.

ROLL TOP DESK — Ash meat block. Ph. 428-8200. x19

I WILL NOT BE RESPONSIBLE for any debts whatsoever other than my own after Oct. 1, 1971. Sheila Anne Flowers (Mrs. James Wilbur Flowers) 20

FOR RENT—New duplex. Carpeted, 2 bedrooms, full basement, stove, refrigerator, North Lake area. No children or pets. Phone 428-9787 evenings. x19

**ALLSTATE INSURANCE**  
AUTO • BOAT • COMMERCIAL  
LIFE • HEALTH • HOME  
Phone Eves. or Week-ends for  
N. H. MILES, Agent  
GR 5-8334 44

**SPECIAL OF THE WEEK**  
1969 Cutlass Supreme  
2-dr. hard top, air conditioning, bucket seats, vinyl top, console, power steering, power brakes (show room new)  
\$2295

**USED CARS**  
1971 Cutlass Cruiser, air cond. (like new) \$3495  
1971 Buick Skylark Custom 2-dr., hardtop (like new) \$3195  
1970 Buick LeSabre Custom 4-dr. hardtop air, cond. \$2995  
1970 Chevrolet Custom Impala 2-dr. hardtop, vinyl top \$2295  
1969 Pontiac Executive 3-seat station wagon, air cond. \$2695  
1969 Olds Delta Custom 2-dr., vinyl top \$1995  
1968 Toronado, air cond. \$2095  
1968 Electra 225 Custom 4-dr. hardtop, full power, vinyl top, air cond. \$2295  
1968 Olds Delmont 2-dr. hardtop, vinyl top, power steering, power brakes, clean \$1495  
1967 F-35 Cutlass 4-dr. sedan \$1195  
1968 Volkswagen Ghia \$1295  
1966 Olds Delta 4-dr. hardtop, (very nice) \$ 995  
1966 Olds 88 4-dr. sedan \$ 895  
1966 Pontiac 4-dr. sedan \$ 895  
1965 Pontiac Grand Prix, vinyl top \$ 695  
1965 Chrysler Newport 2-dr. hardtop \$ 595  
1965 Dodge 4-dr. sedan \$ 195

**SPRAGUE**  
Buick-Olds-Opel, Inc.  
1500 S. Main St., Chelsea  
Phone 475-8864 19tf

### WANT ADS

BOARDING, trimming, training. Town and Country Kennels, Jackson Rd. at Baker. NO 8-7200. 7tf

#### Gem Travel Trailers and Campers

##### PICK UP COVERS

4" \$100.00

28" \$179.00 and up

#### Triangle Sales

Chelsea 475-4502 40tf

#### CLOGGED SEWER Reynolds Sewer Service

We Clean Sewers Without Digging  
Drains Cleaned Electrically  
FREE ESTIMATES  
3-YEAR GUARANTEE  
Phone Ann Arbor NO 2-5277  
"Sewer Cleaning Is Our Business—  
Not a Side Line" 38tf

**This Week's Special**  
1968 Chev  
Station Wagon  
V-8, Automatic  
ONLY  
\$1295.00

#### USED CARS

'71 Lincoln 4-dr., air  
'70 Galaxie 2-dr. hardtop  
'70 Thunderbird, with air  
'69 Galaxie 500 2-dr. hardtop  
'69 Galaxie 500 4-dr.  
'69 Custom 500 4-dr.  
'68 Squire wagon  
'67 Mercury 2-dr. hardtop  
'66 Buick LeSabre  
'66 Galaxie 500 XL with air

#### TRUCKS

'69 Dodge 1/2 ton  
'69 Ford 1/2 ton  
'67 International 1/2 ton pick-up.  
'65 Ford 1/2 ton \$795

#### See Us About Demonstrators and Driver Education Cars PALMER FORD

Open Mon., Wed., Thurs., Till 9:00  
Chelsea GR 5-8271 x18tf

**LARGE SINK**—54 inches, one basin and two sides with Dishmaster faucets, \$25. Man's hunting suit, size 46, \$25. Also 10' by 15' green 501 nylon rug with mat. Ph. 475-7486. x19

**FOR RENT**—Furnished 2-bedroom mobile home, on two acres, couples preferred, no children or pets. Deposit required. Call weekdays after 6 p.m. Detroit 826-6281. x19

**WANTED**—Carpenter who will do light inside work this winter in spare time in Chelsea area. Must be reasonable and do good work. Will be at home coming Saturday and Sunday. 1036 Tamara Dr., Bass Lake. Or write A. Parentier, 6161 Radnor, Detroit 48224. -19

### WANT ADS

ROBERT PATRICK for home improvement, building and maintenance. Ph. 475-7460. 45tf  
HAMMOND ORGAN teachers wanted to teach in their own homes. Call Grinnell Brothers, Ann Arbor, 662-5687. 34tf

**CALL FRANK** for all your carpet cleaning jobs, morning or weekend. Needs only 3 hours to dry. Only 10c per square foot. Phone now for free estimate, 761-4828. All work guaranteed. 33tf

**PIANO TUNING**, Chelsea and area. Facilities for reconditioning and rebuilding. Used piano sales; reconditioned grands and verticals. E. Eklund. 426-4429. x50tf

#### Contractor Servicing Chelsea, Dexter and Manchester Areas

Complete Home Remodeling  
Inside and Outside

Specializing in extra living space, recreation rooms, kitchens and paneling. Installing all aluminum products, 6" eavestroughs, custom-made awnings, windows and doors, aluminum siding in many selected colors and styles.

Please Call

**DALE COOK**  
Chelsea 475-8363 20tf

**CHELSEA School District**  
Five Beautiful  
Country Sites  
in  
Noah Heights  
Adjacent to Half  
Moon Lake State Park  
Model Open 2-6  
Sat. and Sun.

Any time by appointment

**Featuring**  
—Carpeting throughout  
—2-car garage  
—Full basement  
—Hotpoint stove and refrigerator  
—All aluminum exterior  
—Concrete porches, sidewalk, gravel drive  
—Storms and screens

**COME OUT AND TALK TO US  
ABOUT OUR WIDE VARIETY  
OF HOME PLANS.**  
We know you will be pleased.

**W. C. Weber  
Construction Co., Inc.**  
12290 Jackson Rd., Chelsea, Mich.  
475-2828 663-1935 475-4977  
CHELSEA'S PREMIER BUILDER x8tf

#### REAL ESTATE

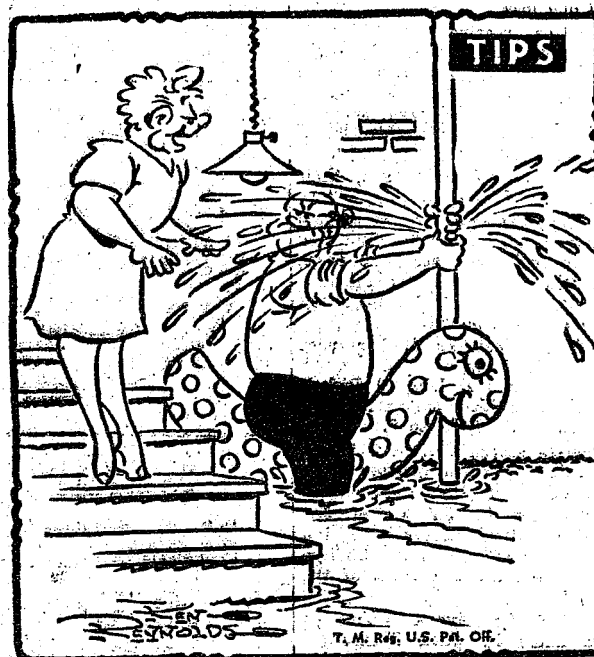
6 ACRES, Sylvan township building lot. Price: \$8,000. Land contract available.

**SYLVAN TOWNSHIP**—Well located 64 acres excellent, level land.

**R. D. Miller  
REAL ESTATE**  
Real Estate Broker  
475-7311  
15775 Cavanaugh Lake Rd.  
Chelsea, Mich. 14tf

**YARD SALE** Friday and Saturday, 9 to 5. Two 1971 Ski-Doo, Olympic 399 snowmobiles and trailers, dated pint fruit jars, collectibles, some antiques, electric guitar and amp, furniture. 19278 North Territorial Rd., Chelsea. x19

**ELECTROLUX  
VACUUM  
CLEANERS**  
SALES and SERVICE  
**JAMES COX**  
Ph. 428-2931 or 428-8221  
Manchester



"Guess what that plumber in the Standard Want Ads said when I told him you was riding a horse in our basement?"

### WANT ADS

TESTED and approved by millions of homemakers. Blue Lustre carpet cleaner is tops. 19  
Dancer's.

#### NO HUNTING SIGNS

Now available  
at

**Chelsea Standard**  
800 N. Main St.

#### MARY WOLTER Real Estate

7421 Dexter-Pinckney Rd.  
near North Territorial  
Phone 24-hour service  
426-8188, 426-8160 or 663-9254

**JUST REDUCED** for quick sale—Ann Arbor area—Brick and frame, three bedrooms, 1 1/2 baths, basement, gas furnace, fenced back yard with adult size swimming pool. A very nice home for only \$20,900. Terms as wanted.

**PORTAGE LAKE AREA**—Two family, two-story income. Aluminum siding, new upper apartment, three bedrooms, carpeted, all electric. Lower, two-bedroom, separate furnace, large living room, fireplace. A good investment for only \$30,000.

**SCENIC BUILDING SITE**—Four lots with lake privileges at Portage Lake, Hillsdale. Only a few hundred feet from private beach. Listed at \$12,400, terms.

**RESTRICTED SECLUDED** building site. Over one acre. Near private access to Little Half Moon Lake. Near McGregor Rd. Natural gas available. \$10,000. Terms.

#### MARY WOLTER Real Estate

7421 Dexter-Pinckney Rd.  
near North Territorial  
Phone 24-hour service  
426-8188 or 426-8160  
or 663-9254 x20

#### PURCHASING AGENT

Familiar with medical terminology and supplies to assume supervisory duties in Central Supply Department of 110-bed hospital. Excellent working conditions, fringe benefits. Salary commensurate with ability and background. Apply in person.

#### CHELSEA COMMUNITY HOSPITAL

775 S. Main  
An equal opportunity employer x45

#### And Away You Go . . .



for miles of smooth  
motoring after you  
fill up with our  
PURE gas and oil.

One stop here keeps you going safely, surely. Try our speedy, friendly, competent service. You'll come back again and again!

**JIM'S PURE SERVICE**  
Tires — Batteries — Tune-Ups — Brake Service — Wheel Alignment  
PHONE 475-2822 501 SOUTH MAIN

### WANT ADS

WANTED — Roll-top desk and round table. Ph. 428-8200. x19

#### SPIKE'S FLEA MARKET

ANTIQUES and COLLECTIBLES

Every Saturday  
and Sunday  
11 a.m. to 7 p.m.

Auctions  
Every Saturday  
at 7 p.m.

Dealers and public invited.

4065 Page Ave.  
Michigan Center, Michigan  
(Page Ave. Exit, east 7/10 mile)  
Phone (517) 764-0250 x13tf

WANTED—Painting, interior and exterior, and general cleaning. Reasonable rates. Call 475-8594. x20

#### Real Estate For Sale

**OVERLOOKING INVERNESS** golf course — New 3-bedroom brick, full basement, garage. Brand new. \$48,500.

**SAME VIEW**—3-bedroom, aluminum siding, 2 1/2-car garage. \$37,500.

**EXECUTIVE HOME** — 1-year-old, 3 bedrooms, family room with fireplace, central air conditioning. 2300 sq. ft. 1 1/2 acre lot. Close to town. \$60,000.

#### CLARENCE WOOD BROKER

Efficient PERSONAL Service  
646 Flanders St.  
Phone 475-2033 18tf

#### APPLES

Spies, Yellow Delicious, Winesaps \$3.00 per bushel.  
(Smaller amounts, too.)

#### Sweet Cider and Colorful Fall Decorations

Come out and browse.

**Peterson's Orchard**  
Corner Hadley & Bartell Rd.  
Unadilla  
Hours—Friday, Sat., Sunday  
11:00 a.m. to 6 p.m. 19

#### REAL ESTATE

4-BEDROOM quad-level home, family room with fireplace, carpeted, recreation room with bar, 2 1/2 acres, large barn, property surrounded with many areas of state land, call for appointment to visit this estate.

3-BEDROOM HOME, on one-half acre, nicely landscaped, large pond with fish, and boating, immediate occupancy.

3-ACRE PARCELS, zoned for mobile homes.

1/2 ACRE with 10x60 mobile home near Gregory, land contract available.

HAVE VACANT 2-, and 10-acre parcels.

#### Howell Town & Country, Inc.

Local Representative  
CARLIE WIEDMAN  
Phone 878-3177 20

**FOR RENT** — 5-room downstairs, unfurnished apartment. No pets, no children. Reply Box OC-4, care of The Chelsea Standard. x20

**FOR SALE**—Studded snow tires, 7:00-13 with 5-hole wheels; stereo standard for circular speakers, never used; Scott's spreader; old Spartan cabinet radio, records and record player; 4-qt. electric ice cream freezer; cottage furniture. Cheap. 475-8985 after 4 p.m. x19

**FOR SALE**—1966 Ford Galaxie 500, automatic, V-8, 4-dr. hardtop, power steering and brakes, good body and engine, 2 new tires, \$500. Phone 475-2318. 19

#### MEN'S WORK CLOTHING

Winter Thermo  
and Insulated  
Underwear

Red Hunting  
Wear

**DANCER'S**  
Basement 10

### WANT ADS

XEROX COPIES made. Merkel Brothers. 41tf  
Patching and PLASTERING. Call 475-7489. 33tf

**FOR REAL DOLLAR SAVINGS** be sure and see us before you buy any new or used car. Palmer Motor Sales, Inc. Your Ford Dealer for over 60 years. 2tf

#### Custom Kitchen Cabinets and Formica Tops

Made to Order

475-2857 32tf

**G. G. HOPPER**  
Building Contractors  
Phone GR 5-5581  
Gregory 498-2148 40tf

#### 2-CYCO FUEL For All 2-Cycle Engines WHITE GAS

Available at

**Gateway  
Sports Centre, Inc.** 45tf

**PRINTING** from John's Shop—for weddings, anniversaries or any occasion. Satisfaction guaranteed. Prompt service, reasonable prices. Phone 475-7500. -21

**ALCOA SIDING** with Remodeling—Since 1938. Prompt service, professional workmanship. William Davis Contractor. Ann Arbor, Mich. Estimate, no obligation. Phone (818) 663-6635. Completed work near you. x23

#### Hearthside Yarn Shop

5450 Conway Road

Yarns, needles, accessories  
Free instructions in knitting and crocheting with follow-up assistance.

Orders taken for hand-made items.  
Ph. 475-2014 36tf

**PRE-SEASON SPECIAL**—Motor-Ski-Snowmobiles. Full line of sporting goods. Open 6 a.m. to 8 p.m. daily. Hudson Mills Sporting Goods. Corner of Dexter-Pinckney and N. Territorial Rds. 426-3144. x19

#### KERN REAL ESTATE

Phone 475-8563 16tf

#### Don't Put Off Planting Tulips 'Til Too Late

We have a good selection of large, vigorous bulbs.

**Chelsea Hardware**  
Your Pro Hardware 19

#### YARN

The Selection  
Is Great!

It's All New  
at  
**DANCER'S**

Basement 19

### —SPECIALS—

Chocolate, Banana, German Chocolate, Brownies. Your Choice.  
**Sara Lee Cakes . . . ea. 69c**

ECKRICH SLENDER-SLICED  
**Meats . . . . 3 pkgs. 89c**

FARMER PEET'S  
**Smoked Picnics . . . lb. 39c**

FARMER PEET'S  
**Ring Bologna . . . lb. 69c**

KEYKO  
**Margarine . . . . 3 lbs. 89c**

6 PAC CARNIVAL  
**Ice Cream Sandwiches**

. . . . . 2 pacs 75c

### SCHNEIDER'S

MEATS - GROCERIES  
PHONE 475-7600 121 S. MAIN ST.

**Your  
Confidence**  
... base it  
on our long record  
of personal service.

**Staffan Funeral Home**  
"Funeral Directors for Four Generations"  
124 PARK STREET PHONE GR 5-4417



## WANT ADS

US for transit mixed concrete. Klumpp Bros. Gravel Co. Chelsea 475-2530, 4920 Love Rd., Grass Lake, Mich. 49061.

SWOICD - You pick up. Very reasonable. Ph. 475-8323. 18tf

SALE - Potatoes. Martin Shibley, Jr., 11296 Island Lake Ph. 426-3161. x21

IES - Earn \$7 to \$10 an hour showing Bee-Line fashions. Part-time or full-time. Call 423-423 or 423-4651. x19

ND CONTRACTS PURCHASE - D. Call R. A. McLaughlin, 475-7500 (517) 366-7765. x12tf

ONCHING - Water, electrical, footings, etc., 4 to 14 inch wide, 0 to 6 feet deep. Call Charles Slocum, 475-7611 evenings. x8tf

PLES - Pick your own. Apple Orchard. Fresh cider and apples. Open daily 9 a.m. to 6 p.m. 4260 Willis Rd., 1/2 mile east of Ypsilanti Hospital off US-23. Phone 434-2828. x13tf

TKINS QUALITY PRODUCTS, amounts for vanilla and spices. Miller, phone 426-4126 after 5 p.m. x22

RAVEL TRAILERS - 13-ft. and up; 10x55 ft. trailers. John R. Traylor Sales, Gregory, Mich. Phone 498-2655. x43tf

AR RENTAL by the day, week, and month. Full insurance coverage, low rates. Call Lyle Christwell at Palmer Motor Sales, 5-3271. x25tf

R & TRUCK LEASING - For details see Lyle Christwell at Palmer Motor Sales, GE 5-3271. x49tf

OR SALE - Year-around home at Pleasant Lake, 12 miles north of Jackson. 5 rooms and bath, large driveway and storage room. Large lot with lots of trees and shrubs. Ken Byerly, 107 Water St., Stockbridge. Phone 851-7652. 18tf

OR SALE - Meyers 7 1/2 ft. snow blow. Hydraulic electric lift. Only one year, \$260. 4998 South Lake Rd., South Lake. Call 27-2748. x19

OUND - 10-week-old black puppy. tan feet, collar mark, at M-52 and Werkner. 14433 Island Lake Rd. 19

OFFICE CLEANING wanted in Chelsea by experienced woman. Phone 475-2027. x19

WILL DO BABY-SITTING in my own country home on Cavanaugh Rd., by elderly lady. Any time. Phone 475-8033 anytime. 23

## WANT ADS

FOR SALE - Decca electric guitar, used one month. Also, size 9E football shoes, only used once. Phone 663-8228. x49tf

## Buying Or Selling A Home Or Farm?

Now is the beginning of a very active winter and spring real estate market. If you (or a friend) are thinking of buying or selling, don't hesitate to give us a call, and we will be pleased to discuss your property with you.

## Spear & Associates

REALTORS

1985 Pauline Plaza  
Ann Arbor, Mich.  
Bus. 769-5750  
Res. 769-9380

FOR SALE - Winter squash, all kinds. Phone 475-7889, Steve Toth, McKernan Dr., corner of I-94 and I-24. x20

FAMILY BIBLES REPAIRED - Academy Book Bindery, 3225 Central, Dexter. Phone 426-8081. x24

FAMILY HORSE - Experienced 4-H, trained English and Western, Appaloosa gelding, good looking and reliable. 475-7261. x19

FOR SALE - Antique occasional tables, 1 Cherry, 2 Oak. Also misc. items and collectibles, some coins. 1098 Guinan Rd., Sugarcoast Ph. 475-2242. x18

FREE BUILDING, one 9x12 room, up and ready to be moved away. FOR SALE - Standard size lavatory, white tub and sink, stool is blue. Phone 475-2893. 19

## SLACKS & JEANS

Ladies, Men's,

Boy's & Girl's

Hundreds

To Choose from

at

DANCER'S

## WANT ADS

UITAR INSTRUCTION. Classical, folk, pop. Emphasis on style. Only \$5.50 for 1/2 hour. Phone 475-1125. x47tf

FOR RENT - Fair Services Center for meetings, parties, wedding receptions, etc. Weekdays or weekends. Contact John Wellnitz, phone 475-4431. x27

YOUNG RESPONSIBLE secretary would like one-bedroom apartment. Phone 475-1279 after 6 p.m. 17tf

WORK WANTED - Carpenter wants part-time work. Reasonable rates. Satisfaction. Remodeling and all carpentry work. Phone Gregory 498-2539. x20

CUSTOM TAXIDERM - Call Jim's Taxidermy Shop, 475-2805. 17tf

FOR SALE - Used Rupp mini bike, excellent condition, \$150. Call 475-8126 after 4 p.m. 19

## FRISINGER

CHELSEA  
2 acres next to Village limits. Quality brick home, large family room, fireplace, beautiful pine trees.

Laneview, 3-bedroom colonial, excellent condition, fenced in back yard, attached garage, dining room, family room. Priced to sell.

1 1/2 acres, all brick ranch home, 3 bedrooms, dining room, family room, fireplace, 2-car garage.

Sharp 2-bedroom ranch home. Large lot, attached garage, range, refrigerator, air conditioning, new carpeting all included.

MANCHESTER  
Immaculate 4-bedroom, brand new condition thru out. One of the grand homes of Manchester.

3-car room, fireplace, dining room, breakfast room, large 2 1/2-car attached garage. Will sacrifice beautiful decoration, all carpet. Must sell.

3-unit income apartment. Priced to sell at \$27,500. Land Contract possible.

ANN ARBOR  
4 Quality ranch homes from \$26,900 to \$37,000. All located on the west side of Ann Arbor.

Very nice 2-family income apartment. Located on the south side of Ann Arbor near down town.

LAND  
108 acres beautiful rolling hills, ideal building sites. Priced to sell, Manchester schools.

85 acres teeming with game, deer, pheasant, rabbits. Frontage on small lake, woods, stream. Adjacent to 6,000 acres of state land.

Dexter schools, 5-10 acre building sites. Some left with woods, streams. Nice high building sites.

FARMS  
Golf course, 9 holes, greens in excellent condition. 4 tees for each hole. 9.415 yards. 6 beautiful ponds all stocked with fish. 4-bedroom Early American remodeled farm home. All equipment included. Priced to sell at \$140,000 per acre.

Horse Farms, 4 to choose from, one 40-acre for \$50,000, two 20-acre for \$30,000, three 17-acre for \$55,000, and a 10-acre farm for \$35,000. All within 15 to 35 minutes of Ann Arbor.

Call Your Farm Specialist

Frisinger Realty Co.

Chelsea, 475-8681

George Frisinger, 475-2903

Paul Frisinger, 475-2621

Herman Koenig, 475-2613

Hope Bushnell, 475-7180

Serving

Ann Arbor

Chelsea

Dexter

Manchester

Member of Multiple Listing Service x19tf

FOR SALE - Gar Wood travel trailer, 7 by 13 feet, good condition. 974 S. Dancer Rd. Ph. 475-7900. 19

GREEN THERMAL DRAPES - 150 by 84 inches, 48 by 48 inches. Bar bell set. Ph. 475-2322. 19

FOR SALE - Barbi and Ken clothes that are washable. Made to order, at 524 Arthur St. 20

FOR RENT - Office or store space. Downtown Chelsea. Phone 475-5341. x21

HELP WANTED - General office. Full time, no Saturday work. Call 663-4109 or 662-7657. x19tf

FOR SALE - '69 Ford Galaxie 500, 3300 cc. 4-cyl. engine, 11 cu. ft. freezer. \$65. Amana freezer, 12 cu. ft. \$90. Phone 426-8314 after 5 p.m. x19

BABYSITTING in my home, Baker Rd., in Dexter. Ph. 426-8848. x19

FOR SALE - Maytag wringer type washer, and set of portable laundry tubs, both in good condition. Reasonable. Phone 475-2691 after 5:00 p.m. x19tf

CHelsea

FINANCE CORP.

\$25 to \$1,000

For Any

Worthwhile Purpose

See or Call

FRANK HILL

at 475-8631

111 PARK STREET

CHELSEA, MICH.

## WANT ADS

REPAIR SERVICE for household refrigerators, freezers and garbage disposers. Call Bill, 426-8814. x12tf

DO YOU NEED masonry work done? Phone Ken Young, 426-3342. Basement laid for 50¢ per block. Free estimates on brick work and fireplaces. x27

HELP WANTED - House work by the day. Ph. 475-7732. 22

LOST - Half Siamese females; one cream with tiger points and blue eyes, and on Sept. 12, silver potted tiger, white on chin and under nose. Island Lake at Werkner. Answer to Samantha and Susie. Reward. Call Dr. Clark collect, (313) 356-7880, between 9 a.m. and 6 p.m. weekdays. x25

DOLL REPAIRING - Antique dolls repaired and dressed. Will buy old dolls and parts. 426-3569. x20

FOR SALE - Double snowmobile trailer. Ph. 475-8005. 19

APARTMENT IN COUNTRY - Four rooms and bath. Stove and refrigerator. Available Nov. 1. No pets or children. Phone 668-8716. x19

MUST SELL MY HORSES to meet college expenses. Three registered POA's, all excellent bargains. Call 475-2679. x19

FREE PATCHWORK KITTENS - White with calico minus orange. Weaned and litter-trained. Lx19

ALPINE 426-8268. x19

HELP WANTED - Sales - FARMS SPECIALISTS. Excellent opportunity for dynamic man who is familiar with farms, and farm land around Chelsea-Dexter area. Prefer licensed real estate salesman. Call Phil Spear, Spear & Associates, Realtors, 769-5760. x21

FOR SALE - Aurora HO track, 1/2 mile used, half price. 14 long curves, 7 short curves, 2 straight crossings, 14 long straight sections, 3 short straight, 2 terminals, 21 pieces railing. Plus 2 cars. \$35 firm. 479-6921 after 6 p.m. x19

WANTED - Apartment-sized furniture. Sofa, bed, stove, refrigerator, other misc. items. Phone 475-2931 after 6 p.m. x20

GET OUT OF TOWN

Enjoy Country Living

150 BEAUTIFUL rolling acres with large frontage on Notten Lake near Chelsea and the Waterloo Hunt Club. Just north of I-94. The farm has frontage on both sides of the road and is located in a scenic rural area. Existing home is simple but there are excellent building sites. Being sold to settle an estate. Listed at \$600,000 an acre but offers will be considered. Might sell as two parcels. Land contract terms available with one third down.

Willis Regl Estate  
(517) 522-8481

FOR SALE - 12 to 110 volt business refrigerator, 2 cu. ft. Ph. 475-8467. x20

WANTED - Odd jobs. Call 475-8262. Own transportation, with trailer. x19

LOST - Red and white medium size male dog with very curly tail and pointed ears, no collar. Phone 475-2718. 18

NAVY BLUE MAXI COAT, size 9, like new. 1 pr. swinging button doors, natural finish. Electrolux vacuum cleaner, self-winding cord. Phone 475-7638. 19

WANTED - Babysitting in my home. Responsible, references. Phone 475-7368. 19tf

CROSSMAN'S QUARTET Saturday night, Oct. 30, 7:30, Bethel Baptist church, Springport Rd., Jackson. Gospel singing at its best! x19

CROSSMAN'S QUARTET Saturday night, Oct. 30, 7:30, Bethel Baptist church, Springport Rd., Jackson. Gospel singing at its best! x19

APPLE CIDER for sale - Ferry's Stand, corner Werkner Rd. and Waterloo Rd. 19

FOR SALE - Portable typewriter, \$5; small electric refrigerator, no frozen food compartment, \$5. 19

YARD SALE - 200 Francisco Rd., Grass Lake, Oct. 28 and 29. Toys, clothes, books, Avons, and miscellaneous. 19

## WANT ADS

FREE - Healthy 9-week-old kittens looking for good home. Ph. 475-2189. x19

WORK WANTED - House work by the day. Ph. 475-7732. 23

FOR SALE - Steinway professional upright piano, ebony, 1 year old \$1,500. Phone 475-2705. x19

HELP WANTED - Live in to care for elderly person. Easy duties. Write Box OC-28, care of Chelsea Standard. 19tf

HELP WANTED - Sit 5 hours with elderly person. Very light duties. Phone 475-2006. 19tf

TWO 2-YEAR-OLD Corriedale rams. Also 30-gal. electric water heater. Phone 428-5585. 19

WALNUTS FOR SALE - Shucked, washed and dried. Phone 475-6622. 19

CARD OF THANKS

The family of John C. Schneider would like to thank their many friends, neighbors, and relatives for making this past week a little easier to bear in the loss of our loved one. A special thank you to Mr. and Mrs. Burghard, Chrysler Proving Grounds, Immanuel Bible Church, and Pastor LeRoy Johnson. Our Lord's richest blessing on each of you.

Mrs. John Schneider.  
Donald Schneider and family.  
Robert Schneider and family.  
Walter Keizer and family.

CARD OF THANKS

A very special Thank You for all the acts of kindness that were shown during Jim's long illness and his passing. A Thank You to the Rev. Clive Dickinson, First United Methodist church, Chelsea Milling Co., Chelsea Medical Center, Staffan Funeral Home, and all the neighbors in the Dewey Street area. A thank you to all who brought food, sent cards, called on Jim in the hospital, and made contributions to the Jean Sweet Fund. May God bless all of you.

Mike, Margaret and Philip Sweet

THANK YOU

I wish to express my thanks during my stay at the hospital: to my sister-in-law, Mrs. Anthony V. Budres, who brought her mother, Mrs. Amelia Birgillites and my mother, Mrs. Anthony C. Budres, 85, all of Grand Rapids, for their gifts, flowers and beautiful decorated cake to celebrate my birthday and our 35th anniversary; for the flowers wired from my brother and family, Mr. and Mrs. George V. Budres and family, owner of the Budres Lumber Co. in Grand Rapids; the long distance call to the hospital from my sister and husband, Mr. and Mrs. Harold Thomson of Grand Rapids; the cards, letters and gifts from my sister and brother-in-law, Mr. and Mrs. Joe Zidel of Grand Rapids; the long distance call, also to the hospital, from my sister-in-law and daughter, Mrs. E.J. McCullough and Mary of Grand Rapids; and I wish to thank all my friends for cards and calls and the visit and plant from Phyllis Daniels, the potted plant from the Chelsea Lumber Co. Thanks also to St. Joseph Mercy Hospital for the tender care, and to the Chelsea Clinic for the attention they gave me during my stay; thanks to Dr. Botsford and Dr. Bronson for attending me there. And thanks too, to Mrs. E. J. McCullough and daughter, Mary, for the Sunday visit to celebrate my birthday and our anniversary.

Thank you is a small word, but given with the deepest feelings never to be forgotten.

Mrs. Frederick Schultz.

CARD OF THANKS

We would like to thank the friends, neighbors and relatives who were so kind and thoughtful to Doug and our family during his illness and after his death. Our special thanks to Mr. Lionel Burghard for his prayers and comforting words.

The Family of Douglas Hailey

## THANK YOU

I'd like to thank all my friends, relatives and neighbors for their calls and flowers while I was in the Chelsea Community Hospital and also since I've returned home. They sure were appreciated.

Mrs. Gladys Sharp.

## CARD OF THANKS

We wish in this way to thank all the people of the community who contributed to our welfare during Glenn's extended illness. We would like to thank all the friends, relatives, and neighbors who sent gifts, food and flowers. They were greatly appreciated. A special thanks goes to the clubs, organizations, police and fire departments for their gifts, flowers and co-operation. My deepest thanks go to the Rev. Kelin at this time. I don't know who I will ever be able to repay everyone for their generosity and kindness.

The Family of Glenn Schiller.

## THANK YOU

I wish I could thank everyone personally for the many cards, flowers, books, and other gifts I received during my confinement in hospital and while convalescing at home. It is gratifying to know that one has so many friends.

George Meranuck.

## THANK YOU

I wish to express my thanks and appreciation to all my friends, neighbors and relatives for all the many acts of kindness extended to me and my family while I was in the hospital and since my return home. A special thank you to the Chelsea Blood Bank.

Lorine Ellenwood.

## THANK YOU

I would like to thank everyone who helped me through the past few weeks with their prayers, cards, gifts of flowers and visits. I also would like to thank my friends who helped me right after the accident, to Pastor Siebert for his visits, and the doctors at the Chelsea Medical Clinic for their visits and help. I would especially like to thank the Chelsea Blood Bank for their generous gift of 24 pints of blood to replace that used during my operation. Thanks again to everyone.

John R. White.

## THANK YOU

I wish to thank my many friends and relatives for the telephone calls, visits, and plants. Special thanks to the Rev. Kuehler and the Rev. Dickinson. It is so nice to be remembered in such a thoughtful way.

Al Kuhl.

## Garage Sale Will Benefit Baseball Team

A garage sale to benefit the Chelsea varsity baseball team will be held Saturday, Nov. 6 from 10 a.m. to 4 p.m. at 637 Flanders St.

For anyone who hasn't already cleaned out his basement, attic, garage, closets and cupboards, now's the time to do it. In addition to donations of merchandise for the sale, the committee is accepting anything you feel is too good to give away. You put a price on an item and they will try to sell it for you. You get 50 percent and the team gets 50 percent.

By having this kind of sale the committee hopes to get better items. Many articles will be for sale, including clothing, furniture, dishes, toys and many more.

You may call Mrs. Robert Daniels at 475-5551 or Mrs. Paul Mann at 475-1208 or any members of the baseball team if you wish to have items picked up. Someone will be at 637 Flanders on Friday afternoon, Nov. 5 to accept items.

## Festival Choir Selected for Trip to Nassau . . .

(Continued from page one) you and your choir have attained."

The 22 members of the group ment. This invitation attests to the will now begin attempts to raise high standards of musicianship the \$5,500 needed for the trip.

## It's A Savings

To Have Prescriptions Filled at

at

WINANS OPTICAL

PHONE 475-1233

114 N. Main (in Sylvan Hotel) Chelsea, Mich.

DAVID WINANS, Optician

(30 Years with Johnston Optical Co.)

APPOINTMENTS NOT NECESSARY

TODAY'S THOUGHT

By LOUIS BURGHARDT

A comic once said, "The trouble with political jokes is that sometimes they get elected." At various times in various places the joke has in fact held true. It is also a truism at times that the guy who works his gums the most before election is the same guy who gums up the works after he is elected. He is usually the person who is an expert in looking for trouble, finds it everywhere, diagnoses it wrong and applies wrong remedies.

You can say or think what you want — jokingly or seriously. The ballot box is STILL the essence of democracy . . . It is STILL the best place to solve problems caused by conflicting minds and interests . . . The ballot box is a place of decision . . . YOUR decision about men or issues counts as much as anybody else's . . .

There is a powerful reason — perhaps above all others — for you to vote. You have the responsibility and the right to decide who will spend YOUR money, and how it will be done . . . Isn't that a rather good reason to vote? . . . BURGHARDT FUNERAL HOME, 214 East Middle St., Chelsea, Mich. Phone GR 5-4141.

## —SPECIALS—

12-OZ. BOTTLES

Coca-Cola . . . 6 pac 49c

Plus deposit

RED OR YELLOW

Delicious Apples

. . . . . 4-lb. bag 53c

20-OZ. JAR WELCH

Grape Jelly or Jam . . . 39c

CAMPBELL'S CHICKEN NOODLE

Soup . . . . . 3 cans 47c

FARMER PEET'S RE-PEETER

Sliced Bacon, 1-lb. pkg. 49c

KUSTERER'S

FOOD MARKET



## Community Calendar

Regular communication of Olive Lodge No. 156 F&AM, Tuesday, Nov. 2, 7:30 p.m.

Chelsea Rebekah Lodge No. 130, Nov. 2 at 8 p.m. All old eye glasses are needed. Call Mrs. Dick Keizer or Mrs. Geno Coltre for donations. Reports or representatives to assembly will be read at this meeting.

PNG Club, 9:30 p.m., Nov. 11, at the home of Mrs. Steve Slane.

Cavanaugh Lake-North Sylvan Grange, with Mr. and Mrs. Lyman Adams, 114 N. East St., Nov. 2 at 12 p.m. Birthday dinner. Bring own dishes and dish to pass.

American Legion Auxiliary, Tuesday, Nov. 2, 8 p.m. Sylvan Town Hall. Bring Christmas decorations to this meeting.

Past Matrons pot-luck, 12:30 p.m., Nov. 4 at the Temple.

Regular meeting of Olive Chapter No. 108, 7:30 p.m., Wednesday, Nov. 3 at the Masonic hall.

Jaycees dinner meeting, Tuesday, Nov. 2, 6:30 p.m., K. of C. hall.

Olive Lodge No. 156 F&AM Life Member and Past Master's night Tuesday, Nov. 9. Dinner at 6:30 p.m. Reservations with Don Dancer, 475-7683. Entertainment following.

Chelsea OES Rummage Sale at Masonic Temple, Nov. 19 from 9 a.m. to 9 p.m. Nov. 20 from 9 a.m. to noon. For pick-up, call 475-1141 or 475-8913. adv22

TOPS Club at library, Wednesday afternoon group, 12:30 p.m. For information call 426-4549. Tuesday evening group, 8 p.m. For information call 475-8952.

Inquiries regarding the Chelsea blood bank may be directed to Harold Jones in the event that Mrs. Dudley Holmes is unavailable, or to Mrs. Pauline McKenna, American Red Cross in Ann Arbor, 971-5300.

Chelsea Social Service, second floor of the Municipal Building, is open each Tuesday and Thursday, afternoon from 2 p.m. to 5 p.m. to assist persons with problems, either through counseling, or referral to other agencies, when indicated. Limited financial help may be given. The office also maintains a clothing depot for new and used clothing and bedding which is given without charge. All visitors welcome. Phone 475-4531.

Sewing every Tuesday afternoon at Korner House.

Association for Children with Social and Learning Difficulties, Thursday, Nov. 4, 8 p.m. at the Co-operative Service Center, 1575 Miller Rd., Ann Arbor. Tom Triahanas, head of Helping Teachers, and in charge of the learning disabilities program in Ann Arbor, will speak and respond to problems parents present at the meeting. For more information, phone 761-8182, 9 a.m. to 12 p.m.



Chelsea Community Farm Bureau monthly meeting Wednesday, Nov. 10, 8 p.m. at the Sylvan Town Hall. George Brett, Schneider and John Brooks will be the hosts.

Modern Mothers Child Study Club, Nov. 1, 7:30 p.m. at the Michigan Consolidated Gas Co. in Ann Arbor for a demonstration on "Festive Foods for the Holiday Season."

American Legion and Auxiliary hospital equipment available by contacting Loren Keezer at 475-2766 or 475-3431.

## Debaters Win First Class A Tournament

Saturday, Oct. 23 was an historic day for the Chelsea varsity debate team. The debaters won their first Class A tournament ever—the Huron Invitational held at Ann Arbor Huron High school—topping 24 schools with their seven win-one loss record.

And in addition to the team win, negative speakers Chick Lane and Dan Gaunt were rated the best debaters in the tournament, and both received trophies for their performances. The best speaker trophies were the second won this year by both Lane and Gaunt.

Other members of the varsity team were Mike Hergert and Carol Fairbrother, who debated the affirmative side of this year's proposition, "Should the Jury System in the United States be Significantly Changed?"

The win was the most important one of the season for the team, Coach William Coelius said. It should make Chelsea a strong contender for a spot in the state finals which are held at the University of Michigan in the spring.

Two novice teams also competed in the event, and both had a 4-4 over-all record. Novice debater Donna Clark won a top novice negative speaker trophy, giving Chelsea a total of four trophies for the day.

Chelsea has also entered a new, and difficult, league comprised of five schools, Coach Coelius said, and Chelsea is currently ranked second in the unnamed league.

Battle Creek Lakeview tops the league with a 4-0 record. Chelsea, Marshall, Jackson Parkside, and Lansing Waverly are in a four-way tie for second place with 2-2 records, and Kalamazoo Central is in third place with a 0-4 record, with eight more debates scheduled.

Chelsea's varsity will compete this Saturday in a tournament to be held at Jackson Community College.

## Community Chest

(Continued from page one)  
stand "they will get behind the chest again and give it the support they did last year. Without the support of the community we have to cut the amount we give to all the agencies that depend on us for support."

## DEATHS

### Douglas M. Hafley High School Junior Class Member Dies Oct. 22

Douglas M. Hafley, 17, 651 Pierce Rd., died Oct. 22 at St. Joseph Mercy Hospital in Ann Arbor.

He was born March 17, 1954 in Ann Arbor, the son of LaVerne and Vera Ganzhorn Hafley. He was a junior at Chelsea high school.

He is survived by his father and step-mother, Mr. and Mrs. LaVerne Hafley; three brothers, LaVerne, Jr., Dennis, and Ronald, all at home; two sisters, Mrs. Jack (Judy) Osinski of Ypsilanti, and Janet, at home.

He is also survived by his maternal grandmother, Mrs. Gertrude Ganzhorn of Ann Arbor, several aunts and uncles, and one niece. His mother died Feb. 24, 1961.

Funeral services were held Monday, Oct. 25 at 1:30 p.m. at the Staffan Funeral Home with Lionel Burger of the Church of Christ officiating. Burial followed in Maple Grove Cemetery at Sylvan Center.

### Paul Howard

#### Operated Grocery Store On Dexter-Pinckney Rd.

Paul Howard, 47, 6100 Portage Lake Rd., Dexter township, died suddenly Monday, Oct. 25 at St. Joseph Mercy Hospital in Ann Arbor.

He had lived in the Chelsea-Dexter area for the past 25 years, moving to the Dexter township address two years ago. He served in the U.S. Navy during World War II, and has operated the Huron Creek Party Store on Dexter-Pinckney Rd. since 1969.

He was born Jan. 28, 1924 in Salterville, Ky., the son of D. G. and Anna Hamilton Howard. He was married to Pauline Horn, May 5, 1950. She survives.

Also surviving are two sons, Dennis and Keith, and one daughter, Panda Lee, all at home; one step-son, Fred Brown of Lexington, Ky.; two brothers, Ralph Conley of Gregory and Frank Conley of Temperance; three sisters, Mrs. Richard (Ruth Ann) Hamme, of Ann Arbor, Mrs. William (Mamie) Mouch of Gregory, and Mrs. Kelse (Vera) Salzer of Hazard, Ky.; and several nieces and nephews.

Funeral services will be held at 2 p.m. today, Thursday, at the Burghardt Funeral Home in Chelsea with the Rev. Robert Diekmann officiating. Military graveside rites will be conducted by American Legion Post No. 31 of Chelsea at Oak Grove Cemetery.

### Registrations Accepted Until Friday for Special School Election

Voters in the Chelsea School district must be registered by Friday, Oct. 29 to be able to vote in the special November school election.

A \$19 mill bond issue for the construction of a facility for retarded and multiply handicapped children in Washtenaw county by the Washtenaw County Intermediate School District will be voted on Nov. 30.

Voters may register at their township offices or with the township clerk.



**LONG GAINER:** Jeff Hughes (44), pursued by a Viking defender, tries to turn the corner on one of his three carries totalling 40 yards. Hughes was one of the leading offensive carriers, along with Tim Lancaster and Mark Collins, in Friday night's Homecoming rout of Dundee. This week the Bulldogs will play an away game with South Lyon before returning to Chelsea for a key game with second-ranked Milan, Nov. 5.

## Bulldogs Roll Over Hapless Dundee, 30-3

Chelsea's Bulldogs sank the Dundee Vikings, 30 to 3, in a soggy contest played on Niehaus Memorial field last Friday night. Undeclared Chelsea continues to hold the top spot in the South-eastern Conference with their 5-0 conference record, but Milan's Big Reds are breathing down Chelsea's neck.

Both Milan and Novi have 4-1 records, and both would like to share conference honors with Chelsea. Chelsea will play South Lyon, now 0-4 in the conference this Friday night, and then on Nov. 5, Milan and Chelsea will meet in

Chelsea for one of the key games of the season. The Dundee game hardly challenged the Bulldogs at all. Dundee allowed Chelsea three pass interceptions, yielded three fumbles to the Chelsea defense, and had it not been for the Vikings' fourth

quarter field goal, Chelsea would have posted its first shut-out of the season.

Chelsea scored their first touchdown early in the first quarter on an eight-yard run by half-back Tim Lancaster, following a 64-yard drive. Quarterback Wayne Welton passed to Jeff Hughes for the two-point conversion, and Chelsea led, 8-0.

With 1:28 remaining in the first period, Tom McKernan recovered a Dundee fumble. On the next play, Welton kept the ball and ran 17 yards for the TD. The extra point kick was not good.

Mark Collins scored on the first play of the second quarter after Marty Cashdollar recovered a Dundee fumble on Dundee's 40-yard line.

Chelsea scored again with 1:42 remaining in the first half, as Mark Collins ran 30 yards one play after Chelsea took a Dundee punt. Ralph Stewart ran for the two extra points, and at the half, Chelsea led, 20 to 0.

The Vikings got on the score board as they kicked a 16-yard field goal, with only two minutes to go in the fourth quarter.

Chelsea had nine different ball carriers during the game. Leading carriers were Collins with two touchdowns, Lancaster with eight carries for 48 yards, and Hughes with three carries for 40 yards.

Defensive leaders were Marty Cashdollar who recovered two fumbles and intercepted one pass; Tom McKernan who recovered one fumble, and Ed Keongreter and Bob Elliott each credited with a pass interception.

This Friday's game at South Lyon will begin at 7:30 p.m.

### CHS Football Schedule

Oct. 29—South Lyon .....away  
Nov. 5—Milan .....home  
Nov. 12—Jackson N.W. ....away

The JV's will host the South Lyon Lions tonight at 7 p.m.

### Friends of Library

(Continued from page one)

Hoffman, and Mrs. George Atkinson.

Members of the group not present at the meeting may take their dues to the library.

## Sunday Reception Frosh Grid Will Honor Departing Pastor Team Scalped By Tecumseh

Members of the congregation of the First Congregational church will hold a coffee hour and reception from 11 a.m. to 12:30 p.m. Sunday, Oct. 31 in honor of the Rev. Daniel Kelin who will leave his Chelsea pastorate that day.

The Rev. Kelin has accepted an appointment at the Ascutney, Vt., Union church.

Mrs. Paul Mann, chairman of the event, said that the coffee hour is open to all the Kelins' friends who might wish to attend following their own church services, as well as to all members of the Congregational church.

According to Mrs. Mann, an interim minister will be appointed within the next few weeks to serve until a new pastor is called.

Also serving on the committee for the coffee hour are Merle Barry, Jr., Merle Leach, Orville Tompkins, and Tom Holmes.

In freshman grid action last week, Chelsea's Bulldogs traveled to Tecumseh only to be scalped by the Indians, 30 to 6.

Chelsea started the game with two drives deep into Indian territory. But despite fine running by Ron Collins, both drives stalled before Chelsea could score.

Chelsea seemed to have control of the game, keeping Tecumseh inside their own territory until late in the first quarter.

Tecumseh took control late in the first period, however, scoring early in the second quarter. From then on it was Tecumseh's game, as the Indian offense seemed to run at will, and their strong defense stopped all but one Bulldog drive.

With one minute to go in the first half, Chelsea got their only score on a 25-yard pass from Perry Johnson to Paul Wood after Todd Ortring picked off a Tecumseh pass.

Tecumseh and Chelsea both failed to score in the third period, but the Indians scored three times in the fourth quarter, gaining two of the three following interceptions of Chelsea passes.

Chelsea's one threat in the second half came late in the fourth period after several pass completions, but Tecumseh forced a fumble, ending the threat and preserving their 30 to 6 victory.

"It was just a bad night for us all," said freshman coach Bill Bainton. "Tecumseh played fine ball and we looked bad."

The freshman gridriders played South Lyon at home Tuesday, and will conclude their season Nov. 3 with an away game at Michigan Center.

### JC Goblin Patrol Set for Halloween Trick or Treat Hours

Chelsea Jaycees will have their "Goblin Patrol" on the streets during the official Halloween "Trick or Treat" hours of 5 to 6:30 p.m. Saturday, Oct. 30.

Jaycees, wearing white arm bands, will patrol the streets to make sure that Halloween tricks don't get out of hand, and to help any young trick or treaters who might need assistance. The Jaycees will also try to keep an eye on the homes of elderly residents during the official Halloween eve on the 30th.

## Introducing the easy clean-up LATEX enamel

Sherwin-Williams, who brought you Kem-Glo, America's leading oil base semi-gloss enamel now brings you KEM-NAMEL, a top quality latex semi-gloss enamel.

A white that  
STAYS white  
Won't yellow like  
ordinary enamels.

Easy Clean-Up  
Soap and water  
cleans brushes,  
rollers.

Use it anywhere  
For walls, wood-  
work, cabinets—  
kitchen and  
bathroom walls.

Easy-to-use  
No brush marks...  
no roller overlaps.  
Dries fast.

Remarkable Tough  
Good for years  
of easy-to-clean,  
scrubbable use.



**\$9.49**  
GALLON

**GAMBLES**

110 N. MAIAN 475-7472

## LIBERTIES

A son, William Charles, IV, Oct. 25, to Mr. and Mrs. William Coelius, III.

A daughter, Tiffany B., Oct. 24, to Mr. and Mrs. Binie Thomas.

A daughter, Bethany Jane, Oct. 20 at St. Joseph Mercy Hospital, to Mr. and Mrs. H. Mitchell Cumberworth, Jr., 1008 W. Madison St., Ann Arbor. Mrs. Cumberworth is a former reporter for the Chelsea Standard.



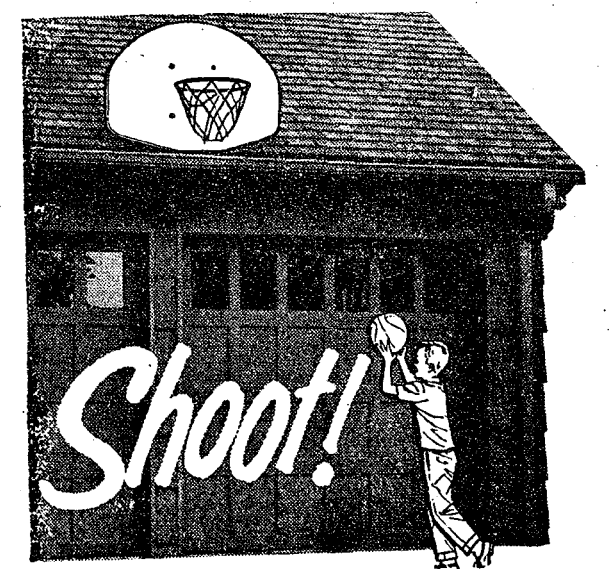
While making repairs  
protect your loss of  
normal business profit  
with

**Business  
Interruption  
Insurance**  
See your A-D Man

**A. D. MAYER  
AGENCY, INC.**

115 Park St. Chelsea  
"Your Protection Is Our Business"  
Phone 479-5061

**Auto-Owners  
INSURANCE COMPANY**



## BASKETBALL SET

★ BACKBOARD ★ GOAL ★ NET ★

**\$14.95**

★ 15 FT. TELESCOPING STEEL POST ....\$24.95

★ NO. 400 BRACKET .....\$5.95  
(To fasten goal to wall or post)

★ NO. 600 BRACKET .....\$6.95  
(To fasten goal to sloping roof)

★ GOAL ONLY .....\$2.98

All in Stock at

**CHELSEA LUMBER CO.**



SOLID OR PATTERNS  
FLARE OR STRAIGHT LEGS

**\$18 or \$25**

**STRIETER'S MEN'S WEAR**

"The Place To Go for Brands You Know"

THE SUPERMARKET THAT'S JUST A LITTLE BIT BETTER

Stop & Shop

14901 Old U.S.-12  
Corner at M-52  
Chelsea



THE KNOW HOW OF INTELLIGENT MEAT  
BUYING IS REALLY 'KNOW WHERE'

Our customers have learned to depend on the outstanding quality of Stop & Shop meats — unfailing satisfaction with every cut they purchase. The finest quality, together with the experienced expertise of our meat cutting experts, makes an unbeatable combination!

Prices Effective Thursday, October 28, 1971,  
through Sunday, October 31, 1971.

U.S.D.A. CHOICE BEEF

RIB  
STEAKS

Top Quality "Trimmed-Rite" Boneless

PORK ROAST ...

U.S.D.A. CHOICE BEEF

Club Steaks ..... \$1.39 lb.

U.S.D.A. CHOICE BONELESS BEEF

Delmonico Steaks ... \$1.99 lb.

U.S.D.A. CHOICE BEEF

Chuck Steaks ... 79¢ lb.

U.S.D.A. CHOICE BEEF

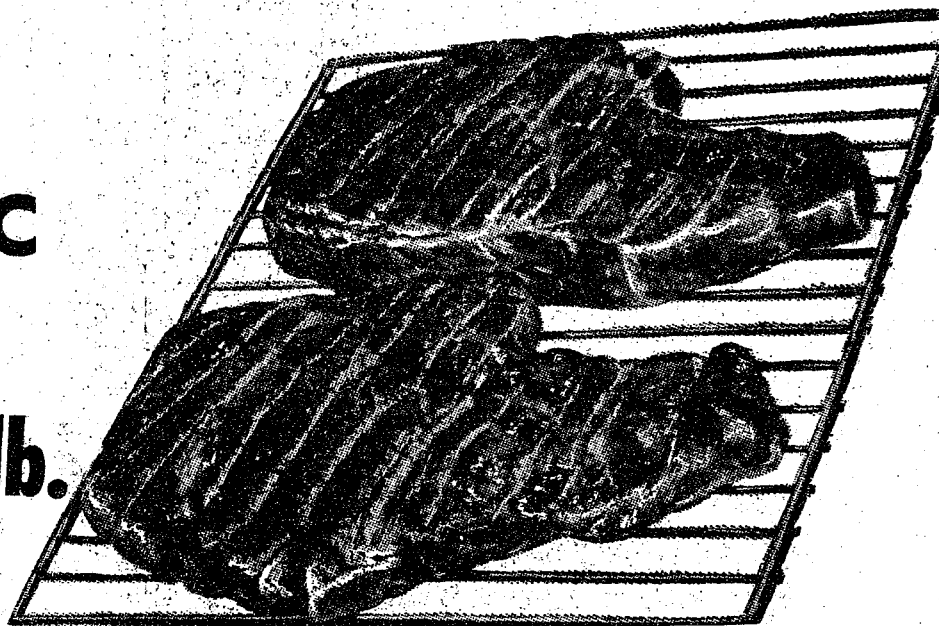
Chuck Steaks ... 89¢ lb.

Cut  
Short

89¢  
lb.

Boned,  
Rolled  
and Tied

59¢ lb.



HYGRADE'S

BALL PARK FRANKS

79¢ lb.

TOP QUALITY ECKRICH

SMORGAS-PAC

1-Lb.  
Pkg.

99¢ lb.

FRESH BONELESS CUBED

Pork Cutlets ..... 79¢ lb.

FRESH PRACTICALLY BONELESS

Pork Steaks ..... 59¢ lb.

U.S.D.A. CHOICE BONELESS

Beef Stew ..... 99¢ lb.

CIRCLE A THICK-SLICED

Sliced Bacon ..... 99¢ lb.

OVEN - GLO

BREAD  
6 1 1/4-Lb. Loaves \$1.00

JESTER DRY

DOG FOOD  
25-Lb. Bag \$1.99

SCOTTIES

FACIAL TISSUES  
200-Ct. Box 4 for \$1.00

NORTHERN ORCHARDS

APPLE CIDER  
1 Gal. No-Return Jug 88¢

Courteous, Friendly Service

For Your Shopping Convenience ...

STORE HOURS:  
Monday thru Saturday  
9 a.m. to 9 p.m.  
Sunday, 10 a.m. to 5 p.m.

Plenty of FREE PARKING

MCDONALD'S HOMOGENIZED

MILK

1 Gal.  
Crtn.

85¢

MCDONALD'S

HALF & HALF

1 Qt.  
Crtn.

39¢

ICE COLD

BEER & WINE

Farm Fresh Produce

U. S. No. 1 Michigan Delicious, Jonathan, McIntosh

APPLES ... 38¢

Western

BARLETT PEARS ... 23¢

Home Grown Pepper, Butternut and Buttercup

SQUASH ... 2 for 29¢

Fresh

CARAMEL APPLES .3 for 39¢

MEADOWDALE

POTATO CHIPS

13-Oz.  
Bag

38¢

VAN CAMP

PORK & BEANS

1-Lb., 15-Oz.  
Can

16¢

GERBER'S STRAINED

BABY FOOD

4 1/2-Oz.  
Jar

11¢

CAMELOT  
POP

Root Beer, Cola, Red Pop

1/2 Gal.  
No-Return  
Bottles

3 for \$1.00



Duncan Hines  
LAYER CAKE MIXES

3 for \$1.00

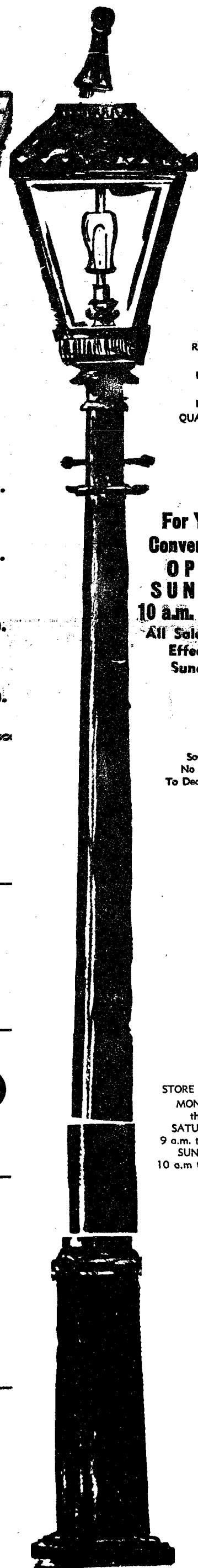
PLUS: Free  
COOKIE RECIPES  
in our Store

WE  
RESERVE  
THE  
RIGHT  
TO  
LIMIT  
QUANTITIES

For Your  
Convenience  
OPEN  
SUNDAY  
10 a.m. - 5 p.m.  
All Sale Prices  
Effective  
Sundays

Sorry,  
No Sales  
To Dealer

STORE HOURS:  
MONDAY  
thru  
SATURDAY  
9 a.m. to 9 p.m.  
SUNDAY  
10 a.m. to 5 p.m.







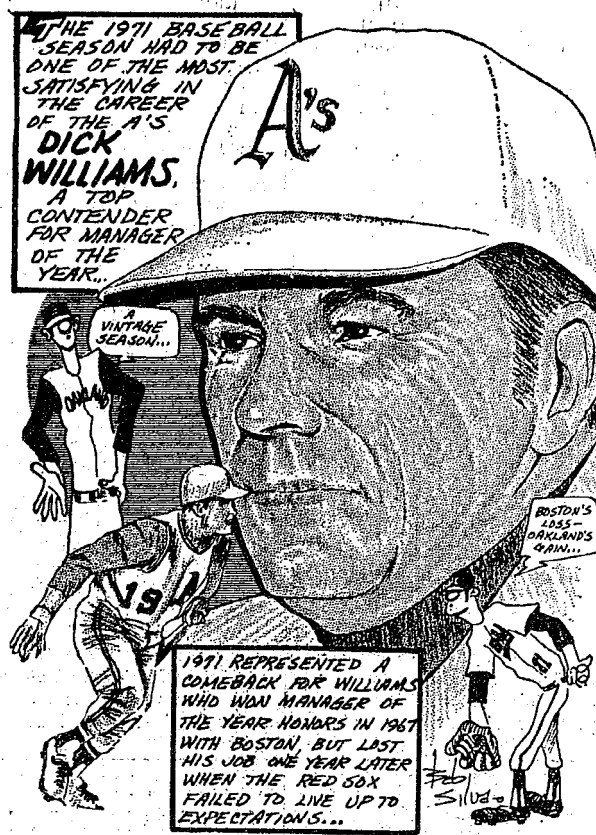




# BOWLING NEWS



## SPORTS CORNER



### Guys and Gals Mixed League

Standings as of Oct. 21

	W	L
city's Tavern	16	8
The Odd Couples	15	9
ub No. 2	14	10
ub No. 1	14	10
helsea Standard	13	11
helsea Lanes	13	11
leasant Lake Resort	13	11
grass Lake	12	12
anewood	12	12
ay Haulers	10	14
orris Electric	8	16
eam No. 1	8	16

Triple score by Mitchell Zink of 62, 162, 162.

Team high game: The Odd Couples, 870.

Team high series: The Odd Couples, 2,409.

Women's high game: L. Graf and S. Moore, 211.

Women's high series: N. Collins, 506.

Women's 150 or over games: P. Elliott, 153, 157, 157; P. Huston, 180, 166, 159; S. Steele, 150; P. Wirth, 151, 184; S. Zink, 162; S. Moore, 162, 211; L. Graf, 201; N. Collins, 169, 191; L. Sanderson, 82; D. Eder, 161; E. Koenigster, 166; C. Timmerman, 162.

Women's 450 or over series: N. Collins, 506; S. Moore, 492; P. Elliott, 467; P. Huston, 505.

Men's high game: T. Steele, 224.

Men's high series: T. Steele, 584.

Men's 175 or over games: J. Elliott, 205, 186; T. Steele, 190, 224; A. Sannes, 180; R. Moore, 177; J. Collins, 178; D. Smith, 175; R. Schumde, 172; E. Eder, 181.

Men's 500 or over series: J. Collins, 513; J. Elliott, 553; T. Steele, 584.

### Chelsea Nite Owl League

Standings as of Oct. 25

	W	L
Pump & Pantry	23	5
Steele's Heating	20	8
Team No. 8	15	13
Chelsea Finance	14	14
Heller Electric	14	14
Cavanaugh Lk. Store	13	15
Ted's Standard	13	15
Smith's AAA	12	16
Jack & Son Barbers	12	16
Foster's Men's Wear	11	17
McCalla Mobile Feeds	11	17
Wahl's Arco Sparks	10	18

500 series: T. Steele, 551; A. Peterson, 545; D. Buku, 534; R. Green, 538; R. Bradley, 532; A. Gieske, 523; A. Kuhl, 517; J. Jaken, 514; R. Kishmaul, 513; E. Heller, 512; D. Warren, 512; G. Packard, 511.

### Junior Swingers

Standings as of Oct. 23

	W	L
The B.C.'s	17	9
The Red's	17	10
The Strikers	16	12
The B. B. A.	15	13
The Pin Pushers	14	14
The Champions	13	15
The 74 Swingers	12	16
Saturday Strikers	7	21

Series over 130: D. Eisele, 131, 160; R. Collins, 153, 162, 154; J. Collins, 159, 147; S. Bowen, 149, 162; M. Burnett, 142; S. Lysteria, 155, 139, 144; D. Messner, 130; D. Alber, 205, 140; R. Verwey, 137; D. Fitzsimmons, 144; K. Sannes, 133; L. Hafner, 161, 145; B. McGuire, 133; B. Skittenhelm, 219, 132.

Series over 350: D. Eisele, 399; R. Collins, 469; J. Collins, 432; S. Bowen, 413; M. Burnett, 370; S. Lysteria, 438; D. Messner, 362; D. Alber, 472; D. Fitzsimmons, 362; L. Hafner, 417; V. Burnett, 366; B. Skittenhelm, 478.

### Hi-Point Mixed League

Standings as of Oct. 19

	W	L
Four Squares	173	115
Knock Outs	169	119
Alley Katz	166	122
Dreadnaughts	164	124
Flat Tires	156	132
Ding A Lings	147	141
Station WPPP	147	141
Holy Terrors	138	150
River Rats	137	151
Hi Steppers	120	168
Question Marks	116	172
Easy Riders	95	193

Men, over 450 series: D. Crum, 529; K. Lofquist, 458; H. Morton, 497; F. Steers, 462; M. Purdy, 500; O. Inbody, 517.

Men, over 160 games: O. Inbody, 180, 172, 165; M. Purdy, 160, 186; D. Carpenter, 180; F. Steers, 172; H. Morton, 187, 163; V. Jeffers, 168; K. Lofquist, 160; P. Fletcher, 164; D. Crum, 184, 178, 167.

Women, over 425 series: M. Barth, 543; C. Klapperich, 468; P. Crum, 465; G. DeSmith, 458; S. Walton, 450; M. Paul, 461.

Women, over 160 games: M. Barth, 154; S. Walton, 155; M. Paul, 151, 169; B. McNutt, 178; G. DeSmith, 164, 162; J. Fletcher, 153; P. Crum, 162, 155; C. Klapperich, 154, 171.

### Charlie Brown & Snoopy's Friends Prep Division

Standings as of Oct. 23

	W	L
Pin Fighters	18	3
Good Guys	17 1/2	3 1/2
Beacrats	14	7
Strikers	11	10
Flip Flop Mop Tops	11	10
Pro's	9 1/2	11 1/2
Mustangs	8	13
Fantastic 5	5	13
Bullpups	4	17
Eagles	3	18

Games over 100: B. Lewis, 100, 122; M. Bowen, 123, 116; K. Mshar, 121; C. Sannes, 137; D. Craft, 148, 120; B. Lovely, 100, 114; A. Kalish-ek, 109, 111; D. Packard, 105; C. Collins, 104; K. Milliken, 115; D. Thompson, 100, 105; J. French, 113; J. Push, 118, 163; C. Umstead, 101, 110; J. Sweet, 122; J. Alexander, 107, 107; M. Schnadt, 109, 104; P. Greenleaf, 103; D. Alexander, 108; B. Bennett, 101; J. Boyer, 124, 111; B. McGibney, 101; M. Foster, 123, 125.

Series over 200: B. Lewis, 222; M. Bowen, 239; K. Mshar, 217; C. Sannes, 236; D. Craft, 268; B. Lovely, 214; A. Kalish, 220; D. Thompson, 205; J. Push, 281; C. Umstead, 211; J. Alexander, 214; M. Schnadt, 213; D. Alexander, 200; J. Boyer, 235; M. Foster, 248.

### Rolling Pin League

Standings as of Oct. 26

	W	L
Kookie Kutters	21 1/2	10 1/2
Egg Beaters	21	11
Moppper Uppers	19	13
Spooners	18	14
Jolly Mops	17 1/2	14 1/2
Kitchen Kapers	17	15
Grinders	14	18
Pots	14	18
Mixers	13 1/2	18 1/2
Dish Rags	13 1/2	18 1/2
Brooms	13	19
Coffee Cups	10	22

440 and over games: J. Johnson, 149; R. Strieter, 150; D. Butler, 148, 153, 175; P. Harook, 160; J. Rabbitt, 154, 150; G. Brier, 147, 151, 147; P. Borders, 148; S. Parker, 147, 141; D. Dirlam, 154, 143, 168; K. Del Prete, 144; A. Foster, 147, 141; J. Edick, 156; H. Ringe, 148; N. Hill, 148; J. Myers, 142, 144; J. Lewis, 156; G. Klink, 167, 169, 143; G. Blaess, 140; L. Orlovski, 167, 150; D. Kinsey, 166, 168; C. Shepherd, 145; R. Foster, 145; J. Shepherd, 175; R. Cook, 145.

400 and over series: D. Butler, 467; P. Harook, 403; J. Rabbitt, 439; G. Brier, 445; D. Dirlam, 465; J. Edick, 417; J. Myers, 406; J. Lewis, 402; G. Klink, 479; L. Orlovski, 444; D. Kinsey, 473; J. Shepherd, 452.

Spplits converted: N. Kilpatrick, 3, 10; W. Waldecker, 3, 10; D. Kinsey, 6, 7, 10 and 3, 10; J. Lewis, 3, 10; B. Slater, 7, 9; D. Ringe, 5, 9, 10; N. Hill, 8, 10; R. Bable, 8, 10; E. Reynolds, 6, 7, 10; K. Del Prete, 4, 5; R. Strieter, 5, 6.

### Chelsea Women's Bowling Club

Standings as of Oct. 20

	W	L
Chelsea Milling	21	7
Jiffy Market	20	8
Washenaw Engr. Co.	20	8
Parish's Cleaners	19	9
Chelsea Lanes	16	12
Jiffy Mixes	15	13
Wolverine Bar	12	12
Schneider's Grocery	11	17
Community Serv. Press	10	18
Schumma's	9	19
Norris Electric	9	19
N. American Rockwell	2	22

450 series and over: D. Alber, 597; B. Fritz, 528; T. Steinaway, 508; R. Hummel, 502; P. Poertner, 489; H. Morgan, 480; M. Kozminski, 471; B. Parish, 468; P. Shoemaker, 467; J. Rowe, 465; R. Lutovsky, 468; A. Knickerbocker, 452; A. Sindlinger, 452; A. Turner, 451.

150 games and over: D. Alber, 156, 211, 170; B. Fritz, 156, 190, 182; T. Steinaway, 177, 189; R. Hummel, 180, 182; P. Poertner, 158, 158, 167; H. Morgan, 188, 179; M. Kozminski, 183, 150; B. Parish, 177; P. Shoemaker, 158, 176; J. Rowe, 158, 169; R. Lutovsky, 151, 161; A. Knickerbocker, 162, 164; A. Sindlinger, 158, 158; A. Turner, 182; A. Alexander, 153; L. Orlovski, 151, 173; N. Popovich, 154; D. Fouty, 160; J. Hafner, 173; P. Abdon, 150; B. Larson, 154, 156; C. Hafley, 153; C. Bradbury, 160; P. Wurster, 155; N. Kern, 154; C. Stoffer, 154; D. Fletcher, 155; J. Norris, 160; S. Greenleaf, 176; A. Fahrner, 186; J. Weir, 163; D. Verwey, 190; J. Montgomery, 155; B. Weeks, 170; P. Fitzsimmons, 167.

### Senior House League

Standings as of Oct. 23

	W	L
Chelsea Cleaners	20	8
Spaulding Chevrolet	17 1/2	10 1/2
Sam's Barber Shop	16 1/2	11 1/2
Pub Bar	16	12
Chelsea Grinding	15	13
Bogar Builders	15	13
Sylvan Center	15	13
Seitz Tavern	13	15
Schneider's Grocery	11	17
Murphy's Barber Shop	10	18
Dana No. 1	10	18
Dana No. 2	9	19

600 series: M. Poertner, 605.

500 series: R. Prater, 516; S. Dyer, 546; W. Cruse, 506; D. Hafley, 518; J. Harook, 552; J. Collins, 558; D. Coppemoll, 546; A. Clemes, 507; H. Burnett, 554; L. Hess, 539; T. Steele, 571; M. McClellan, 564; D. Eder, 505; A. Fletcher, 594; W. Moats, 503; C. LaRoe, 502; A. Sannes, 561; W. Griffith, 544; L. Keizer, 529; E. Keizer, 506; R. Knickerbocker, 557; N. Ernst, 548; L. Fahrner, 527; J. Harmon, 525; G. Lawrence, 542; C. Genske, 582; F. Dickerson, 520; T. McClellan, 523; R. Spaulding, 543.

200 games: R. Prater, 222; S. Dyer, 218; F. Gee, 203; J. Harook, 200; J. Collins, 202; M. Poertner, 202, 220; D. Murphy, 226; D. Coppemoll, 209; L. Hess, 207; A. Sannes, 204; E. Keizer, 200; C. Genske, 214; R. Spaulding, 202; J. Harmon, 210.

### Junior House League

Standings as of Oct. 21

	W	L
Wolverine No. 1	43	13
The Pub	39	17
J & S Tool	34	22
Bob's Beefers	33	23
Chelsea Lanes	30	26
Smiths AAA Service	28	28
Gambles	25	31
Boyer Automotive	25	31
3-D Sales & Service	22	34
N. American Rockwell	21	35
Jiffy Mix	20	36
Wolverine No. 2	18	40

200 games: W. Brown, 219; D. Eder, 200; T. Wisniewski, 208; T. Steele, 219; H. Kunzelman, 202; S. Johnson, 211; H. Pennington, 201; J. Harook, 209; E. Harook, 215; N. Fahrner, 202; D. Alexander, 20; A. Fletcher, 233, 213; W. Beeman, 201; C. Koenigster, 224, 210; B. Johnson, 204; J. Myrning, 213, 221.

600 series: A. Fletcher, 614; C. Koenigster, 603; J. Myrning, 629.

500 series: W. Brown, 575; R. Erskine, 544; D. Eder, 556; A. Peterson, 635; D. Scott, 513; S. Hopkins, 501; T. Wisniewski, 546; D. Walton, 00; J. Risner, 523; T. Steele, 568; L. Bauer, 503; H. Kunzelman, 520; R. Kyte, 515; L. Hocking, 503; S. Johnson, 557; A. Sannes, 500; J. Hughes, 511; E. Buku, 523; H. Pennington, 550; J. Harook, 593; L. Fahrner, 510; E. Harook, 556; L. Salyer, 529; N. Fahrner, 545; A. Fleischmann, 524; P. Boham, 527; G. White, 515; D. Alexander, 524; N. Packard, 547; W. Beeman, 558; S. Policht, 513; J. Ledwidge, 512; B. Johnson, 555.

### Sunday Swingers

	W	L
Strangers	10	5
Red Barons	10	6
Right-Ons	10	6
K & B	10	6
Alley Cats	9	7
Team No. 10	9	7
M.P's	8	8
Half Mooners	7	9
Drinkers	7	9
Harvards	7	9
Limelights	6	10
Butternuts	6	10

Men, 200 games: J. Schaffner, 228; G. White, 235; S. Haydock, 203.

Women, 150 games: A. Steinaway, 156; R. McGibney, 170, 170, 168; J. Clark, 155, 158; M. Westcott, 164, 171; C. Padley, 177; A. Schaffner, 150.

**STOP COLD WINTER DRAFTS**  
**FLEXO-GLASS**  
 CRYSTAL-CLEAR, FLEXIBLE PLASTIC  
 Flexo-Glass is the only plastic window material Guaranteed 2 Full Years.  
 WE HAVE THE GENUINE  
 Available at  
**Chelsea Hardware**  
 110 S. Main Ph. GR 9-6311

**YES**  
 WE ARE MAKING  
 LONG-TERM FARM  
 REAL ESTATE  
 LOANS

SEE US  
  
 P. O. Box 1006  
 Ph. 769-2411 3645 Jackson Rd.  
 Ann Arbor, Mich. 48103

**Attention Bowlers!**  
**Halloween Special**  
**SCOTCH DOUBLES**  
**SUNDAY, OCT. 31**  
 8 p.m.  
**Sign Up Now!**

**OPEN BOWLING**  
**SATURDAY, OCT. 30**  
 9 a.m. to 11:30 p.m.  
**SUNDAY, OCT. 31**  
 12 Noon to 8 p.m.

**CHELSEA LANES**  
 1180 M-52 Phone 475-8141

**STOP COLD WINTER DRAFTS**  
**Easy-On**  
**STORM WINDOW KIT 39¢**  
 Kit consists of 36" x 72" tough plastic sheet, 18 ft. fibre moulding and nails.  
**STORM DOOR KIT 49¢**  
 Kit consists of 36" x 84" tough plastic sheet, 21 ft. of fibre moulding and nails.  
 At Hardware & Lumber Dealers Everywhere

**9 out of 10 new Chryslers registered in the last 10 years are still on the road.**

**That should tell you a lot about the cars we sell.**

Whether you own a big or small car, pay a little or a lot, the one thing you don't need from a car is trouble. You want a car that will hold up. A car that's built to last.

Well, we're with you. Just look at this figure:  
**9 out of 10 new Chryslers registered in the last 10 years are still on the road.**  
 This includes all the various owners, any kind of terrain, and numbers of miles. But every Chrysler is designed and built the way you want it—to last. So even if you won't be keeping a car for years and years, it's good to know you've got all that quality going for you in your first year as well as in later years.

**Every Chrysler Imperial is road-tested at the factory.**  
 If our cars aren't right, we don't want you to have them. For example, every Imperial is put through a road test at the factory that includes over 100 different checks before it reaches you.

This year every Chrysler car offers a new optional electronic ignition system that does away with the points and condenser that can wear out. This helps keep the engine tuned longer. And a tuned engine means cleaner exhaust.

From our lowest-priced Chrysler Royal to our big, luxurious Imperial, Chrysler cars are built to last. The same is true of every Chrysler-engineered car we sell—Valiant, Duster, Cricket, Satellite and Fury.

We think that's the kind of car America wants. That's the kind of car we'd like to show you. Come see us today.

**Coming through with the kind of car America wants.**

**VILLAGE MOTOR SALES, INC. · 1185 Manchester Rd.**

B. Cruse, 520; C. Dettling, 521; R. Pike, 544; A. Fouty, 503; D. Fouty, 503; C. Miller, 529; A. Peterson, 558; J. Stoffer, 583; T. Wisniewski, 525.

150 games, women: V. Allen, 158; G. Dettling, 158, 164; B. Pike, 176, 163, 163; D. Fouty, 172, 158; D. Fouty, 195; N. Miller, 166; B. Parish, 170, 162, 173; D. Sannes, 197; B. Scott, 156; B. Wisniewski, 155.

450 series, women: G. Dettling, 468; D. Fouty, 478; D. Fouty, 480; B. Pike, 492; B. Parish, 495; D. Sannes, 456.

### Chelsea Lanes Mixed

Standings as of Oct. 22

	W	L
Meabon's	32	17
Bollinger Sanitation	30	19
Marsh & Eder	29	20
Fitzsimmons Exc.	29	20
A. A. Centerless	27	22
Barkley & Gephart	26	23
Chelsea Lanes	24	25
Heim & Arrington	23	26
Jarvis & Goltra	22	27
Morgan & Turner	20	29
The Pub	17	32
Sable's Collision	15	34



# SCHOOL LUNCH MENU

Week of Nov. 1 through Nov. 5

Monday, Nov. 1—Chicken, fried steak, whipped potatoes, butter, buttered corn, kitchen-made bread, sliced peaches, milk.

Tuesday, Nov. 2—Bologna sandwich, catsup, vegetable soup, carrot and celery strips, chocolate cake, milk.

Wednesday, Nov. 3—Ham on a bun, catsup, French fries, tossed salad, orange dessert, milk.

Thursday, Nov. 4—Goulash with cheese, buttered green beans, home-made bread, butter, rocky road pudding, milk.

Friday, Nov. 5—Fishwiches, soups, tartar sauce, cole slaw with pineapple, potato chips, fruit supreme, milk.

## Club, Social Activities

### SENIOR CITIZENS

Twenty-nine members of the Senior Citizens group attended a potluck dinner celebration of October birthdays Thursday, Oct. 21.

The table was decorated with a birthday cake and bouquets of chrysanthemums.

Celebrating birthdays in October were Inez Rank, Watson Hart, Nina Wahl, Florence O'Hara, Lila List, Zita Hafner and Mrs. Verna Browning.

The October business meeting will be held Thursday, Oct. 28 at 7:30 p.m.

And of course every Friday night is Fun Nite at the Korner House.

### MODERN MOTHERS

Modern Mothers Child Study Club met Tuesday, Oct. 26 at the home of Mrs. Richard Cook for a Halloween party. Co-hostesses were Mrs. Vern Otto and Mrs. Richard Stoll. Cider and donuts were served to the 16 members present.

Mrs. Douglas Spencer was welcomed as a new member.

The next meeting will be held Nov. 9 at the Michigan Consolidated Gas Co. in Ann Arbor for a demonstration on "Festive Foods for the Holiday Season."

ROGERS CORNERS EXTENSION Rogers Corners Extension Study group met Tuesday, Oct. 19 at the home of Mrs. Walker Wolfgang with Mrs. Elmer Bristle as co-hostess.

A potluck dinner featuring recipes made of fruits and vegetables was enjoyed by the 17 members and one guest present.

The meal emphasized the lesson of the evening, "Elet Fruits and Vegetables," given by Mrs. Walter Wolfgang and Mrs. Elmer Bristle.

Ideas for the Christmas workshop held Oct. 25 and 26 were discussed, and presented at the exhibit.

Mrs. John Morris and Mrs. Hildegard Mitchell will be hostesses for the group's Nov. 16 meeting. Mrs. Luther Schaible and Mrs. John Joseph will present the lesson, "Generation in Crisis." The roll call topic will be "Budget dishes my family lines."

### LYNDON STUDY CLUB

Lyndon Study Club held an installation of officers, and welcomed a new member, at the meeting on Oct. 21.

Fifteen members and two guests were present for the meeting, which was built around a Halloween theme.

Officers for the coming year will be Vera Bassett, chairman; Mrs. G. A. Barton, vice-chairman; Mrs. Irene Hogan, secretary-treasurer; Doris Fuhrmann, project leader; and Mrs. Nettie Hall and Mrs. Wilma Kaiser, sunshine ladies.

Joining the group was Mrs. Thomas Lancaster.

Mrs. Charles Fuhrmann gave the lesson on low calorie diets, and a low calorie dessert was served by Mrs. Fuhrmann, Mrs. Nettie Hall and Mrs. G. A. Barton.

### PHOEBE CIRCLE

Mrs. Mary Clark was hostess to the Phoebe Circle of the United Methodist Church, Wednesday, Oct. 20. There were 15 members and four guests present for the potluck dinner served in Mrs. Clark's home.

Mrs. Robert Harris acted as chairman in the absence of Mrs. The meeting opened with a prayer.

Mrs. T. Solomonson read the minutes of the Sept. 17 meeting. Mrs. Harris then introduced Mrs. E. Van Valkenberg who gave the devotion and the program.

Mrs. VanValkenberg used the story of the Black Madonna for her devotion. Her program on the Mexican migrants and the Farm Worker's Union was taken from the recent edition of Response Magazine. The program ended with a question and answer period and some discussion.

In the meeting which followed, Mrs. Guy Weatherax told about tending quilts and blankets to the "Heart and Hand House" in Philippi, W. Va. It was decided to take an offering at the November meeting for the "Heart and Hand House" to be used for Christmas gifts for children.

A prayer circle closed the meeting.

The next gathering will be Nov. 17. The place and time will be announced.

## 4-H Clubs

### GARFIELD GANG

Last week we were mixed up. Cathy French is the recreation leader and Cindy Bareis is the news reporter.

At our last meeting Mrs. French came and taught us to embroider our names on clovers. We finished our tote bags. Now each girl will choose to make gaucho pants, knickers or a skirt.

Cindy Bareis, reporter.

### Cub Scouts

#### DEN 13, PACK 435—

Last week we started making a haunted house. It had Frankenstein and bats and all kinds of things and we even made a roof with shingles and a chimney. We painted all different things. The treats were provided by Mrs. Alber.

Danny Alber, scribe.

## PIANO - ORGAN STUDIO

LaVonne Harris

CERTIFIED TEACHER

175 Park Street  
Chelsea, Mich.  
Phone 475-7134



**HOMECOMING MC:** The rain caused the half-time homecoming festivities to become an indoor post-game event, but it didn't dampen the enthusiasm of the Chelsea High school students and alumni who filled the school auditorium to see the crowning of the 1971 Homecoming queen, senior Karin Hume. Master of Ceremonies for the event was Tim Merkel.



### TROOP 58—

The Tape Measure patrol is sewing skirts to earn a sewing badge.

The Flying Needle patrol is learning to crochet. They are gluing yarn around paper cups to make decorations for home.

The Paint Box patrol is working on their print badge. Potato print book covers are just one of their projects.

Jill Janes, scribe.

### TROOP 47—

We opened the meeting with out pledge, then we passed treats about and sang "It's God Our Father."

Two patrols, Shooting Stars and Juniors, are working on needle craft and will continue to work at the Methodist church. One patrol, the Green Butterflies, will work on their cooking badges at their leader's house, Mrs. Hoffman.

At the end of the meeting, we played an exciting game of seven-up, then we had taps.

Valisa Fletcher, scribe.

### TROOP 82—

First we had refreshments. Then one patrol did a play and the other patrol read "How Scouting Began." Mrs. Klobuchar showed us how to clean out our pumpkins to make jack-o-lanterns. We closed our meeting after we had cleaned up.

Wendy Myers, scribe.

### TROOP 169

On Oct. 25 we had a Halloween party. We had fun playing games and bobbing for apples. Our treats were cider, Kool-Aid, and donuts, furnished by several of the girls. A gypsy told our fortunes. We decorated trick-or-treat bags. Everybody wore costumes.

Candy Farmer, scribe.

Central Michigan University became Michigan's second state normal school in 1907 when the Michigan legislature voted its first operating appropriation after accepting the school as a gift in 1895.

## Laurence Noahs Honored Sunday on 50th Anniversary

An open house honoring Mr. and Mrs. Laurence E. Noah on their 50th wedding anniversary was held Sunday, Oct. 24 at their Werkner Rd. home.

Mrs. Warren Eisenbeiser, Mrs. Lynn Blecha, Mrs. E. Jay Hopkins, Mrs. Les Eisenbeiser, Mrs. Don Porath and Mrs. Harold Eberts of the North Lake church WSCS, assisted in serving refreshments to the approximately 250 guests.

Mrs. Clarence Embury and Mrs. Laura Fitzsimmons poured and Mrs. William Hogan served the cake.

The Noahs received many gifts.

## Clothing Drive Termed Successful

The clothing drive for "The House by the Side of the Road"—a free clothing distribution center sustained by the volunteer efforts of county church women—held Oct. 19 by Chelsea's Church Women United was a great success, according to Mrs. Jack Merkel, co-ordinator of the drive.

"While we didn't get a large volume of clothing, we did get the kind of clean, useable clothing we were looking for," Mrs. Merkel said.

Church Women United will hold another clothing drive for "The House" sometime this winter, Mrs. Merkel added.

## Ruth Crawford Studying in England At Tufts University

Ruth Crawford, daughter of Mrs. Robert M. Crawford and the late Mr. Crawford, 150 Cavanaugh Lake Rd., a student at Alma College, has begun a year of study in drama and English literature with the Tufts-in-London program.

One of approximately 35 students from the United States selected to participate in the program, Miss Crawford is most involved in the drama side of the project.

Created in 1967 by Tufts University, it is the only overseas program offered by an American University that combines the disciplines of English literature and drama.

English literature is taught by professors from London University and the University of Kent, many of whom are authors themselves. Students also participate in workshop courses in directing and acting conducted by the London Academy of Music and Dramatic Arts.

One of the nation's largest repositories of literature on Michigan and the Old Northwest Library at Central Michigan University.

## THANK YOU . . .

Hilltop Home Improvement Center would like to take this opportunity to thank all of our friends in Chelsea and the surrounding towns for helping to make the Grand Opening of our new store such a big success.

We are happy to announce that Christine Wolski, 13050 Sager Rd., Chelsea, was the winner of our grand prize, a beautiful 36" vanity base with marble top and faucets. We also had 50 other lucky winners of a variety of gifts. Congratulations to all.

We hope that you will allow us to serve you in many ways in the future.

Thanks again,  
Huey, Bob and George

## HILLTOP

1414 S. Main St.

Phone 475-2949

# QUITTING BUSINESS

The former G.A. Sales Used Cars  
**25 USED CARS**  
To Be Sold at Wholesale or Below  
Many Models and Makes

Come look them over  
and make yourself a good deal!

CARS ARE DISPLAYED AT

**TRIANGLE AUTO SALES**

1477 South Main St.

## Methodists Harvest Dinner Family Style

Turkey and All the Trimmings

**Wednesday, Nov. 3**

Starting at 5:00 p.m.

Methodist Church Hall, Manchester

Adults \$2.50. Children 5-12 yrs. \$1.25; 4 & under, free



See the Shocking

**"ONE MINUTE TO CHOOSE"**

at

CHELSEA HIGH SCHOOL AUDITORIUM

**MONDAY, NOV. 1**

at 8:00 p.m.

It May Save A Life!

Sponsored By

CITIZENS FOR QUALITY EDUCATION

## NOTICE OF THE LAST DAY OF REGISTRATION

of the Qualified Electors of

**CHELSEA SCHOOL DISTRICT**

of the Counties of Washtenaw and Jackson, Michigan  
State of Michigan

To the Qualified Electors  
Of Said School District:

WHO MAY VOTE?

Section 532 of Act 269, Public Acts of Michigan, 1955, as amended, provides the following:

The Inspectors of Election at an Annual or Special Election shall not receive the vote of any person residing in a registration School District whose name is not registered as an elector in the City or Township in which he resides . . .

## LAST DAY OF REGISTRATION

The last day on which persons may register with the Township Clerk(s) or City Clerk to vote at the SPECIAL SCHOOL Election to establish a MENTAL RETARDATION SERVICE CENTER, to be held on November 30, 1971 is

**OCTOBER 29, 1971**

Persons registering after 5:00 o'clock p.m., Eastern Standard Time, on the said day are NOT ELIGIBLE to vote at the said Special School Election. Persons planning to register must determine when the City and Township Clerks' offices will be open for registration. In addition to all other times, the City and Township Clerks' offices will be open for receiving registrations on Saturday, October 23 from 8:00 a.m. to 5:00 p.m. (optional).

BOARD OF EDUCATION NO LONGER  
TAKES REGISTRATIONS:

Under the provisions of Chapter 8 of Act 269, Public Acts of Michigan, 1955, as amended, registrations will NOT BE TAKEN BY SCHOOL OFFICIALS and only persons who have registered as general electors with the appropriate Township or City Clerk of the Township or City in which they reside are registered electors.

This Notice is given by order of the Board of Education of Chelsea School District.

DATED: October 18, 1971.

**MRS. CAROLYN SMITH**  
Secretary, Board of Education

# SPECIAL

thru Wednesday, Nov. 3, 1971

**BRAZIER  
DELUXE &  
LG. DRINK  
89<sup>c</sup>**

FREE TRICK OR TREAT BAG FOR KIDDIES

Home of fine Brazier Foods



901 S. MAIN ST., CHELSEA PHONE 475-2677

## HOUSEHOLD

# AUCTION

SATURDAY, NOVEMBER 6

Beginning at 1:00 p.m.

Located west of Ann Arbor or east of Jackson to Exit 162 off of I-94, first house east of Stivers Bar, or corner of Fletcher and Jackson Rd.

## HOUSEHOLD ITEMS

Mahogany Duncan Phyfe table with leaf, seats 8.  
Six straight back mahogany chairs, carved rose design.  
RCA console color TV with UHF adapter, good condition.  
McGraw Edison and Sears automatic humidifiers.  
Edison dehumidifier.

GE 36" 4-burner push-button electric range with large oven.  
Coldspot refrigerator.  
Coldspot 16 ft. upright freezer, like new.

Aqua green davenport with matching chair.  
Contour chair. Kenmore ironer.  
2 webbed lawn lounges and 1 chair.  
5 ft. steel cabinet.  
Aluminum chaise lounge with cushions. Steamer trunk.

Two 7 1/2 ft. school benches.  
Bissell rug shampooer.  
78-r.p.m. records.  
Fireplace screen, tools and andirons.  
Floor lamp.  
Small walnut table.  
Encyclopedia Britannica set with 10 years of yearbooks, with bookcase. Fruit jars.

Freezer boxes and supplies  
4 wicker baskets.  
**SPORTING GOODS & TOYS**  
6-ft. toboggan.  
7-ft. pair skis.  
Pingpong table.  
3 pair ice skates.  
Children's games.  
Misc books and paperbacks.

## LAWN AND GARAGE TOOLS

David Bradley garden tractor with snow plow, cultivator, cutter bar mower, plow, air compressor, disc harrow, and lawn roller attach.

David Bradley 4-h.p. roto spader with cultivating shields and hiller furrow attach., good condition.

24" Craftsman snow thrower, 2 years old.  
4x7 utility 2-wheel trailer with side racks and loading racks.  
Rapidjet pump. Stepladders.  
Many other items too numerous to mention.

Electric fence charger.  
24" concrete lawn roller.  
Wheelbarrow.  
26-ft. extension ladder.  
Craftsman 21-inch power reel mower.  
24-inch lawn sweeper.  
2 Hercules 8.45-15 Polar tires.  
Compressed air tank.  
Two 100-ft. 1/2-in. black plastic hose.  
Chicken brooders and laying nests.  
Misc. hand garden tools.

TERMS OF SALE: CASH Day of Sale Before Removal.  
Not responsible for accidents on grounds day of sale.

**Mr. & Mrs. James Windell**

OWNERS

Dale Hoeselschwerdt, Auctioneer. Ph. Napoleon, Mich. (517) 536-4286



## Pamela A. Pearson, Kenneth Hume Speak Vows in Ann Arbor Church



Mrs. Kenneth S. Hume

Pamela Ann Pearson became the bride of Kenneth Scott Hume in an afternoon ceremony performed by the Rev. Brewster H. Geve at the First Presbyterian church, in Ann Arbor, Saturday, Oct. 23.

Pamela is the daughter of Mrs. John A. Langer, 3025 Lake Haven Ct., Ann Arbor and Ross N. Pearson, 1007 Lincoln Ave., Ann Arbor. Kenneth is the son of Mr. and Mrs. Philip W. Hume, 12 Hickory Dr., Chelsea.

The bride wore an ivory, semi-bell styled gown trimmed with veil, lace, ruffles bordered the high neck, bodice and detachable train, and the narrow sleeves ended in a teacup flared ruffle. Her ivory illusion fingertip mantilla was edged with peau d'ange lace. She carried a bouquet of white roses, baby's breath, and chrysanthemums.

Maid of honor, Miss Adele C. Swope, and bridesmaids Cherie L. Scott and Christine E. Holly, all of Ann Arbor, wore floor-length blue lutescent gowns trimmed with old-fashioned ivory lace, and rings of flowers in their hair. They carried bouquets of assorted bright colored flowers intermixed with baby's breath and assorted dried flowers.

Flower girl Amy Hume, a sister of the bridegroom, wore a floor-length, ice blue lutescent gown trimmed with ivory lace. She carried a nosegay bouquet of bright flowers mixed with baby's breath and dried flowers, and wore a ring of flowers in her hair.

For her daughter's wedding, Mrs. Langer chose a three-piece blue and green dress with matching accessories. Mrs. Hume wore a two-piece ivory dress with multi-colored silk accessories.

Best man was Keith Hume, a brother of the bridegroom. Ushers were James Genova, William Hoff, and Dennis Wadhams, all of Ann Arbor.

Following the wedding, a reception was held at the home of the bride's father.

Upon their return from a three-week wedding trip to Florida and Barbados, the new Mr. and Mrs. Hume will make their home at 1831 Lake Lila Dr., Ann Arbor.

The bride is a graduate of Pioneer High school and Eastern Michigan University, and is employed by the Great Lakes Basin Commission.

The bridegroom attended Eastern Michigan University following his graduation from Ann Arbor Pioneer High school, and is employed by Fingerle Lumber Co.

Telephone Your Club News To GR 5-3581.



"CHRISTMAS FANTASY" is the theme of this year's bazaar to be held Nov. 4 by the women of the First United Methodist church. Looking over some of the items to be sold at the bazaar are (left to right) Mrs. William Storey, chairman of the luncheon committee, Mrs. George Miller, bazaar chairman, and Mrs. Harold Dresch, general chairman of the event.

## Olive Chapter Installs Officers For New Year

New officers of Olive Chapter No. 108, OES, were installed at the Oct. 23 meeting of the lodge.

Conducting the installation were Elaine Boyce, past matron, installation officer; Katherine Ellenwood, past matron, installation marshal; Esther Lucht, past matron, installation chaplain; Hazel Wacker, installation organist and Bruce Galbraith, guest soloist.

Installed as worthy matron was Kathleen Arnett. Installation of the worthy patron, Harold Bair, was postponed due to his hospitalization.

Thelma Pendley and Clarence Pendley were installed as associate matron and associate patron.

Other officers installed are: Lenore Schmidt, secretary; Doris Smith, treasurer; Lorraine Bair, conductress; Barbara DeYoe, associate conductress; Ruth Christwell, chaplain; and Elaine Spencer, marshal.

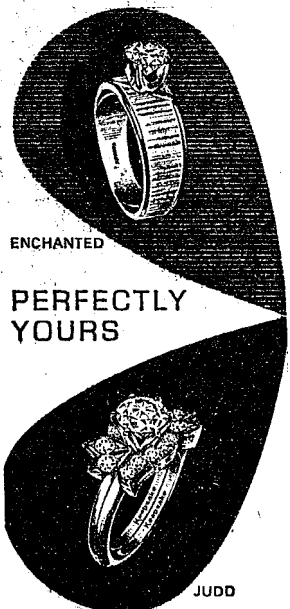
Star points are: Katherine Eisele, Adah; Janet Fulk, Ruth; Ruth Ann Williams, Esther; Maxine Gee, Martha; Doris Watkins, Electa; and J. Wilbert Smith, sentinel.

Auxiliary officers installed at the meeting are: Franklin Gee, American flag; Raymond Canine, Christian flag; Patricia Baldwin, Bible bearer; Luella McMannis, reader; Shirley Smith, Blue Ray of Adah; Margaret O'Dell, Yellow Ray of Ruth; Marilyn Stoner, Green Ray of Martha; and Betty Dreiman, Red Ray of Electa.

Following the installation, refreshments were served in the dining room with Elaine Spencer, junior past matron, and Mildred Colyer, past matron, pouring.

## MORE DEADLY THAN A RATTLESNAKE

A black widow spider's venom—more potent drop for drop than a rattlesnake's—causes intense pain. Deaths, however, occur from only four or five of the more than 1,000 bites reported in the United States each year.



REGISTERED  
Keepsake  
DIAMOND RINGS

The perfect symbol of your love... a Keepsake engagement diamond... guaranteed perfect (or replacement assured). All Keepsake rings are quality crafted in many beautiful styles.

ENCHANTED \$275 JUDG \$300  
ALSO TO 2100 WEDDING RING 125

**WINANS  
JEWELRY**

Rings enlarged to show detail.  
Trade-Mark Reg.

## Christmas Bazaar Planned Nov. 4 at Methodist Church

"Christmas Fantasy" is the theme for this year's Christmas Bazaar, sponsored by the women of the First United Methodist church, to be held Nov. 4 from 10 a.m. to 5 p.m. in the educational unit of the church.

Featured in the bazaar will be a Candles and Dried Weeds shop, the Noah's Ark Boutique with its two-of-a-kind gift items and decorations, the Country Store fea-

## Jaycee Auxiliary To Continue Girl Scout Sponsorship

The Chelsea Jaycee Auxiliary met Oct. 19 at the home of Mrs. Robert Updegraff.

The meeting was called to order by the president, Mrs. Walter Brown, who introduced Mrs. George Shaw, troop service director for Chelsea Girl Scouts.

Following Mrs. Shaw's explanation of the responsibilities of a Girl Scout troop sponsor, the Auxiliary decided to continue sponsoring a scout troop.

The Auxiliary also approved a project to assist Auxiliary member Mrs. Richard Loring who is suffering from a prolonged illness. The Auxiliary decided to help the Loring family in as many ways as possible.

The Auxiliary also decided to donate project reports on the State Basketball Assistance program and the Balloon Ascension contest to the Michigan Jaycee Auxiliary Library.

Mrs. Joe Verway reported that assistance on the Jaycee chicken barbecue was efficient, with all but one auxiliary member working on the project. Mrs. Verway also said that one Jaycee wife who is not an Auxiliary member helped with the project.

Mrs. Douglas Robeson, winner of the Girl of the Month award for September, was appointed chairman of the Jaycee meal committee for November.

A by-laws revision committee was established and Mrs. Robert Updegraff named as chairman.

The meeting adjourned with a round robin of compliments by each member.

Central Michigan University awarded 3,231 degrees in 1970-71, including 2,491 undergraduate and 740 graduate degrees.

## Club and Social Activities

**EPISCOPAL CHURCH WOMEN**  
St. Barnabas Episcopal church women held their monthly meeting Thursday, Oct. 21, at the church.

Plans for a Christmas Bazaar, to be held Dec. 2, were discussed and decided upon.

Refreshments were served by the hostess, Mary Fitch.

## RUTH CIRCLE

Ruth Circle of the United Methodist church had their regular monthly meeting Wednesday, Oct. 20 in the social center with a dessert luncheon at 1 p.m.

Mrs. Watson Hart and Mrs. Dan Ewald were hostesses.

Mrs. Calvin Sommers opened the meeting with a prayer which was followed by the regular business of the month. Elaine McCalla passed the pledge cards for the coming year. Coupons for the Church Women United meeting were taken care of, and they will be turned over at the Nov. 5 service.

Cookies and more cookies were asked for the events of the coming week.

The bazaar for November was discussed, and help was offered.

At this time, Mrs. Sommers turned the program over to Mrs. Carl Schlosser, who spoke on "Gratitude."

The next meeting will be held Nov. 17 in the social center with Mrs. Ross McCalla and Mrs. Ray Tarrasou as hostesses. Mrs. Walter Harper will present the program.

## CHELSEA SUBURBANETTES

The Oct. 21 meeting of the Chelsea Suburbanettes was held at the home of Mrs. Art Stoll. Thirteen members and one guest, Mrs. Norma Patrick, were present.

Guest speaker for the evening was Dr. Jerry Waldyke.

The Nov. 18 meeting of the group will be at the home of Mrs. Edward Lauson with Gerry Blackwell as her co-hostess.

Refreshments were served at the close of the meeting by the hostess, Mrs. Stoll, and her co-hostess, Mrs. William Van Riper.

## South School Teacher Weds In Ann Arbor

Diana Vern Myers became the bride of Carl Roy Richardson in a ceremony performed by the Rev. Fred Maitland of the First United Methodist church in Ann Arbor, Saturday, Oct. 23.

Diana, a third grade teacher at South school, is the daughter of Mr. and Mrs. Richard C. Myers, 1811 Hanover Rd., Ann Arbor. Carl is the son of Mr. and Mrs. Clarence Richardson, 11000 Stoney Creek Rd., Milan.

For her wedding, Diana wore a floor-length gown of gold chiffon and white lace, and a crown of miniature roses. She carried a bouquet of yellow and white roses.

Maid of honor, Miss Nanci Curtis of Ann Arbor, and junior bridesmaid Rebecca Richardson of Milan, wore floor-length blue crepe dresses and carried bouquets of yellow roses.

Best man was David Richardson of Chelsea, a brother of the bridegroom.

Following the ceremony, a reception was held at the home of the bride's parents. Mrs. Carl Myers, grandmother of the bride, poured.

The newlyweds will make their home in Ann Arbor.

The bride is a graduate of Ann Arbor High school and Eastern Michigan University.

The bridegroom is a graduate of Milan High school and Eastern Michigan University and is employed by Hoover Chemical Products, Whitmore Lake.



Mrs. Carl Roy Richardson

## World Community Day Scheduled Friday, Nov. 5

On Friday, Nov. 5, Church Women, United across the country will be celebrating World Community Day. This year special emphasis will be given to creating an awareness of ecological issues.

Women of St. Mary church will co-ordinate the local program which will be held in the Congregational church at 1 p.m. Congregational church women will be hostesses for the event.

Thomas Hodgson, park naturalist for the Waterloo Recreation Area, will speak on some of the problems facing the area environment.

Immediately following the program, Mrs. James Parker of Dexter will briefly explain the Youth for Understanding teen-age exchange program.

it ends  
HERE!

Some call it heroin,  
some call it  
horse, but its  
real name  
is horror...



See the Shocking

"ONE MINUTE  
TO CHOOSE"

or

CHELSEA HIGH SCHOOL AUDITORIUM

MONDAY, NOV. 1

at 8:00 p.m.

It May Save A Life!

Sponsored By

CITIZENS FOR QUALITY EDUCATION

"My free gift to you!"  
Your Rxall Drugist

FREE!  
Kodak  
INSTAMATIC II  
HAWKEYE CAMERA

WHEN YOU BUY A  
365-TABLET SIZE  
BOTTLE OF REXALL  
SUPER  
PLENAMINS.

America's largest selling  
multi-vitamin multi-mineral product!



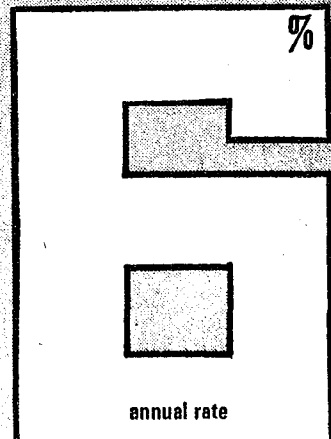
Exclusively at your Rexall Store

**CHELSEA DRUG**

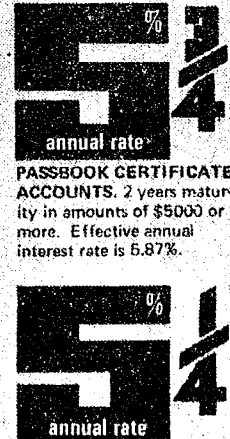
101 N. Main St.

Phone GR 5-4611

big  
bigger  
and  
biggest  
at the  
FED



PASSBOOK CERTIFICATE  
ACCOUNTS, 3, 4, or 5 years maturity  
in amounts of \$5000 or more.  
Effective annual interest rate is 6.13%



PASSBOOK CERTIFICATE  
ACCOUNTS, 1 year maturity  
in amounts of \$1000 or more.  
Effective annual interest rate is 5.35%

Interest is computed daily and compounded quarterly.

**AAFS ANN ARBOR  
FEDERAL SAVINGS**  
the savings and loan specialists

Liberty at Division, West Stadium at Pauline,  
Huron Parkway at Platt, Plymouth at Niles

## WEEK-END SPECIALS

1-LB. BAG MUELLER'S OLD FASHIONED  
Egg Noodles . . . . . 39c

3/4-LB. CAT TABBY LIVER DINNER  
Lifebuoy Soap 2-bar pkg. 39c

5 1/2-OZ. CAN TABBED LIVER DINNER  
Cat Food . . . . . 2 for 35c

4-OZ. CAN SWIFT'S PREMIUM  
Vienna Sausage, 4 for \$1.00

GET YOUR CAR READY FOR WINTER  
with

PRESTONE . . gal. \$1.89

MILK . . . . . gal. 89c

Cigarettes, \$3.39 crtn.,  
39c pkg.

ICE COLD BEER & WINE - LIQUOR

**RICK'S  
MARKET**

20940 M-52

PHONE 475-2898



## Newsletter To Be Issued By Teachers

The Chelsea Teachers Communications Committee will begin issuing a monthly newsletter to all school personnel sometime in November, George Bergman, high school counselor and a member of the committee, announced this week.

The newsletter hopefully will serve as a medium for exchanging information and ideas, as a morale booster, and as an educational experience for students in the high school graphic arts classes, Bergman said.

Although the newsletter will be published by the teachers group, Bergman stressed the fact that it is a forum for all school personnel, teachers, administrators, Board of Education members, and possibly even for students.

Included in the newsletter will be a letter to the editor section, a letter from the Chelsea Education Association (CEA) president's desk, a "person of the month" feature, a calendar of events, editorials, school anecdotes and humor, and cartoons, Bergman said.

Due to the shoestring nature of the as-yet-unnamed publication, the newsletter will initially have a four page, 8 1/2 by 11 inch format. Printing and layout will be done by the high school graphic arts students under the direction of graphic arts teacher Dennis Andariase.

"We hope to foster closer ties between all school personnel, students, teachers and administrators," Bergman said. "We hope we can exchange ideas through this publication."

Members of the communications committee are Ed Lauhon, CEA president; Anne Morgan, North school representative; David Kniseley, Beach Middle school; Margaret Senne, South school, and Bergman.

## Dana Corp. Names Product Manager For Take-Offs

Gene Zavrel has been named Product Manager for power take-offs for Dana Corporation's Power Equipment Division and will be located in Chelsea. The announcement was made by C. H. Clauson, division sales and planning manager.

Gene is a graduate of the University of Illinois with a BS in mechanical engineering. He has been with Dana Corp. for eight and one half years, starting with Perfect Circle. Prior to the announcement, he was product manager for axle products for the Power Equipment Division in Toledo, O.

## Labels May Be Saved To Provide UNICEF Funds

The Chelsea UNICEF committee reminds all area residents interested in helping UNICEF to continue to save labels and empty cartons from the following items:

Front panels from Birds Eye vegetables.  
Empty outer wrappers from Clark gum.  
Ingredient Panels from the back of Hunt's Snack Pack cartons.  
Empty Kool-Aid packages.  
Pals or Pals Plus Iron vitamins box tops.  
Support UNICEF seals from Peter Paul candy.  
Labels from any Welch's jam, jelly or preserves.

The manufacturers of the above products have agreed to send money to UNICEF in exchange for the wrappers.

Collection boxes for the labels are located in Dancer's window, McKune Memorial Library and Stop & Shop. If you would like labels you have saved to be picked up, call Mrs. Warner Siebert, 475-7307.



1970 HOMECOMING QUEEN Karen Kelemen Mauer is escorted on to the Chelsea High school auditorium stage by Senior Rob Stofer shortly before presenting her crown to 1971 Homecoming Queen Karin Hume.

## Junior High Open House Termed 'Great Success'

Open house at Beach Middle school, Monday, Oct. 25, was a great success, school Principal Alan Conklin reported.

Approximately 280 of the school's 650 children were represented at the open house, which featured a capsule schedule of classes.

"It was the largest turn-out we've ever had for this kind of

an open house," Conklin said, adding that he received several favorable comments from parents on the event.

Frank Reed is currently a patient in St. Joseph Mercy Hospital in Ann Arbor, room 429. Cards and visits from friends would be welcome.

## College Night Set at Saline High School

The annual College Night Program—for area students planning to pursue some form of education following their graduation from high school—will be held at Saline High school Thursday, Nov. 4 at 7:30 p.m.

The program will feature representatives of 33 colleges, universities, nursing schools, business schools, technical institutes and community colleges.

The program will begin with a general meeting in the Saline High school auditorium, which will be followed by individual meetings held by the various institutions participating in the event.

There will be three sequential half-hour long sessions so that interested students may investigate up to three schools during the evening.

According to high school counselor George Bergman, the College Night program is aimed at juniors, seniors, and seriously interested sophomores and freshmen and their parents. "It's really not too early for the concerned freshman or sophomore to attend these meetings," Bergman said, adding that most of the schools represented are among those the majority of Chelsea high school students have chosen to attend over the years.

Bergman said that there will be ample parking space and a student guide service available at the new Saline High school, which is approximately one quarter mile behind the former high school.

Schools planning to participate in the program and the rooms in which they will meet, are:

Adrian, room 12; Albion, room 16; Alma, room 14; Ann Arbor Practical Nurse Education Center, room 30; Army ROTC, room 36; Fort Wayne Academy, room 38; Cleary College, room 58; Central Michigan University, room 46.

Concordia Lutheran College, room 3; Eastern Michigan University, room 50; Foote Hospital of Nursing, room 10; Ferris State College, room 43; Grand Valley State College, room 13; General Motors Institute, room 34; Hope College, room 5; Jackson Business University, room 9; Jackson Community College, room 4.

Lake Superior State College, room 8; Lansing Business University, room 19; Mercy College, room 1; Michigan State University room 21; Michigan Technological University, room 6; Naval Academy, room 40; Navy ROTC, room 54; Northern Michigan University, room 47; Oakland University, room 11.

Olivet, room 2; Siena Heights, room 35; Spring Arbor College, room 7; University of Michigan, room 23; Western Michigan University, room 51; and Harvard University, room 24.

## Fire Destroys Large Barn on Herrst Farm

Arson is being investigated as a possible cause of the fire which destroyed a large barn owned by Donald Herrst, 300 Dancer Rd., last Wednesday, Oct. 20.

Chelsea firemen battled the blaze, which was discovered at 10:30 p.m., for more than six hours, aided for about one hour by Dexter firefighters.

According to Fire Chief Jim Gaken, wind, which carried sparks toward the house and another barn, was a problem throughout the fire.

While the barn and its contents of straw, hay, oats, a farm wagon, elevator and blower were completely destroyed, another nearby barn was saved.

Chelsea firemen returned to the Herrst property Thursday afternoon to extinguish smoldering hay which was sending sparks toward the house and remaining barn.

On Friday, Oct. 22, Chelsea firemen extinguished a fire in a home owned by Frank Cianciolo, 3570 Rentz Rd. Damage from the fire, caused by a malfunctioning space heater, was confined to the heater and some smoke damage to the interior of the dwelling.

## Story Hour Slated At McKune Library

McKune Memorial Library will hold a story hour for three- and four-year-old children every Tuesday morning from Nov. 2 through the end of February.

The story hour will begin at 10 a.m. and end at 11 a.m. "Since the library is not open regularly during the morning, we ask parents to bring their children right at 10 and pick them up promptly at 11, Mrs. Kathleen Bernath, librarian and story teller, said.

## Help Us Compile Address List of Men in Service

As the Christmas season approaches, many servicemen, especially those in Vietnam, may feel exceptionally lonely.

At least one Chelsea group, the Cubs of Den 5, Pack 445, led by Mrs. Jessica Dalton, would like to write letters and cards to soldiers overseas.

As a public service, The Chelsea Standard will compile a list of the names and addresses of all servicemen from the Chelsea area phoned or sent to us by their families within the next two weeks. The list will be made available to any person or group wishing a copy.

## Old Photos May Be Picked Up at Library

Mrs. Kathleen Bernath, librarian at the McKune Memorial Library, reminds all area residents who loaned old photos to Ann Arbor Federal Savings that the pictures have been returned to the library, and may be picked up during regular library hours.

## Petitions Ask for Vote on Unicameral Legislature Issue

Chelsea Jaycees will start a door-to-door circulation of petitions Nov. 3 as part of a state wide effort to place the unicameral legislature proposal in the November, 1972 ballot.

If the drive to collect 300,000 signatures is successful, Michigan voters will have a chance to vote on whether or not the present 148-member bicameral legislature should be reorganized into a one-house legislature with 76 members elected from four "senatorial districts" in each of the 19 present U. S. congressional districts.

Only in Nebraska, which now has an unicameral legislature, have the people of the state voted on the question. In 14 other states the unicameral question has been defeated in the legislature itself.

The drive to place the unicameral proposal on the ballot was started by Rep. Joseph Swallow (R-Alpena), and was picked up as a state Jaycee project.

Currently the state Jaycees officially neither support or oppose the unicameral concept, but do support the petition drive to place the question before the voters.

According to Chelsea Jaycees

President David Rowe, petitions were posted in several industries and businesses last Monday, but the response to the posted petitions so far has been minimal.

Local Jaycees will circulate the petitions for one week in an attempt to meet the local goal of 3,000 signatures. The petitions will be turned over to the state Jaycee organization at the fall meeting to be held in Cadillac, Nov. 12.

Chelsea Jaycees are the only chapter in western Washtenaw county participating in the petition drive.

If the proposal is included on the November ballot, the Jaycees will undertake an education project prior to the election to inform voters on the pros and cons of the issue, Rowe said.

Central Michigan University annually receives slightly more than 40 percent of its operating income from State appropriations. Student fees and CMU's Auxiliary Enterprises (food services, bookstores, etc.) account for more than half of the University's annual income.

Subscribe today to The Standard

# DEXTER & CHELSEA AREA RESIDENTS

## OPEN HOUSE



## SATURDAY, OCT. 30

Now you can see for yourself how beautifully different a snowmobile can be. Skiroule is the machine that's five years out in front... and it's on display at our open house.

Skiroule has a new low profile that's much more than just show. It's built closer to the snow for better control, better balance.

The center of gravity is down between the skis, instead of between your knees. The belly pan is shaped like a big ski. So you skim instead of scrape. And super slide-bar suspension keeps you on top, even in the fluffiest stuff.

You get beautiful performance any way you look at it. See for yourself.

All snowmobiles used to be pretty much the same...

skiroule by  
**Coleman**

*then came skiroule.*

## LAND · O · LAKES SPORT CENTER

Your Snowmobile Headquarters

6589 JACKSON ROAD

PHONE 769-5082

VIVIANE WOODARD

COSMETICS

475-8785

Dorothy Ortring, Director

# General Electric puts the squeeze on trash!



## PUSHBUTTON Compactor

compresses a whole week's trash for an average family of four into one convenient take-out bag!

- Easy to operate—just push a button!
- Plugs into any adequately-wired 115-Volt outlet.
- Compacts paper cans, bottles, plastic containers, boxes, wrappings and sweepings to less than 1/4 of their original volume... all in less than a minute.
- Protective GE Bag Caddy makes bag handling easier.



GE Compactor with Bag Caddy, 8-oz. can of deodorant spray and a month's supply of bags

**\$249<sup>95</sup>**

## HEYDLAUFF'S

(Formerly Frigid Products)

113 N. Main St., Chelsea

Phone GR 9-6651